

Atlanta Public Schools/ S. Atlanta Cluster

# Heritage Academy

Revised

## School Assessment Report

November 10, 2020



## Table of Contents

School Executive Summary	4
School Dashboard Summary	7
School Condition Summary	8
<b><u>2002 Bldg 2010</u></b>	10
Executive Summary	10
Dashboard Summary	11
Condition Summary	12
Photo Album	13
Condition Detail	15
System Listing	16
System Notes	19
Renewal Schedule	32
Forecasted Sustainment Requirement	35
Condition Index Forecast by Investment Scenario	36
Deficiency Summary By System	37
Deficiency Summary By Priority	38
Deficiency By Priority Investment	39
Deficiency Summary By Category	40
Deficiency Details By Priority	41
<b><u>Site</u></b>	44
Executive Summary	44
Dashboard Summary	45
Condition Summary	46
Photo Album	47
Condition Detail	48
System Listing	49
System Notes	50
Renewal Schedule	55
Forecasted Sustainment Requirement	56

## School Assessment Report

---

Condition Index Forecast by Investment Scenario	57
Deficiency Summary By System	58
Deficiency Summary By Priority	59
Deficiency By Priority Investment	60
Deficiency Summary By Category	61
Deficiency Details By Priority	62
Glossary	63

**School Executive Summary**

The condition of a Campus is the accumulation of the condition evaluations of the component buildings and the site. Building condition is evaluated based on the functional systems and elements of a building and organized according to the **UNIFORMAT II Elemental Classification**. eCOMET uses parametric estimating methodology whereby historical costs for systems, components and equipment are collected by entities such as RSMeans and converted to unit costs, typically \$/SF, and used to approximate future construction costs or replacement values. The grouping of these systems and elements and applying a current replacement value to them develops a representative building cost model. Cost Models are developed for similar building types and functions. Systems and their elements are evaluated based on their current replacement values, life cycles, installation dates and next renewal dates. Systems and their elements that are within their useful lives are further evaluated to identify current deficient conditions that may have a significant impact on a system's or element's remaining service life, and to determine if they are beyond their predicted expected life. The system's or element's current replacement value is based on RS Means Commercial Cost Data.

Following are the cost model's system details for this facility. The **Current Replacement Value (CRV)** is the amount needed to replace the property of the same present scope. The **Repair Cost** (the sum of the cost to repair/replace the Deficiencies) represents the budgeted contractor-installed costs plus owner's soft costs for the repair, replacement or renewal for a component or system level deficiency. It excludes contributing costs for other components or systems that might also be associated with the corrective actions due to packaging of the work. **Facility Condition Index (FCI)** is an industry-standard measurement of facility condition calculated as the ratio of the costs to correct a facility's deficiencies (Condition Needs) to the facility's Current Replacement Value. It ranges from 0% (new) to 100% (very poor - beyond service life). The **Remaining Service Life Index (RSLI)** is calculated as the sum of a renewable system's **Remaining Service Life (RSL)** divided by the sum of a system's Replacement Value (both values exclude soft-cost to simplify calculation updates) expressed as a percentage ranging from 100% (new) to 0% (expired). The relationship between the key metrics FCI and RSLI is an important indicator, at either the facility, building, system, or component levels, of the condition trend and the imminent need for capital renewal. These indices exist in an inverse relationship wherein the FCI increases when systems reach their expected life-cycle age, whereas the RSLI decreases annually indicating the relative time remaining before reaching the life-cycle expiration age. For example, a facility or a system with a high RSLI and a low FCI indicates it is in the early portion of its useful life. However, a low RSLI indicates that expiration dates are approaching at which point the FCI would increase. The term **FCA Score** is the inverse of Total FCI and calculated as 100-Total FCI (without the %) where 100 is best and 0 is worst condition.

Gross Area (SF):	80,864
Year Built:	2002
Last Renovation:	2002
Replacement Value:	\$16,255,616
Repair Cost:	\$1,437,801.00
Total FCI:	8.84 %
Total RSLI:	40.14 %
FCA Score:	91.16



**Description:**

Heritage Academy is located 3500 Villa Cir SE Atlanta, GA 30354. The one story, 80,864 square foot building was originally constructed in 2002. No additions have been added to the School.

This report contains condition and adequacy data collected during the 2019 Facility Condition Assessment (FCA) Update. Detailed condition and deficiency statements are contained in this report for the site and building elements.

**A. SUBSTRUCTURE**

The building rests on slab-on grade and is assumed to have standard cast-in-place concrete foundations. The building does not have a basement.

**B. SUPERSTRUCTURE**

Roof construction is metal pan deck with lightweight fill. The exterior envelope is composed of walls of brick veneer over CMU. Exterior windows are aluminum frame with operable panes. Exterior doors are hollow metal steel mostly with glazing. Roofing is typically low

## School Assessment Report - Heritage Academy

---

slope built-up. Roof openings include a roof hatch with fixed ladder access. Most building entrances appear to comply with ADA requirements.

### C. INTERIORS

Interior partitions are typically CMU. Interior doors are generally solid core wood with hollow metal frames and mostly with glazing. Interior fittings include the following items: white boards, graphics and identifying devices, toilet accessories, storage shelving, handrails, fabricated toilet partitions. The interior wall finishes are typically painted CMU. Floor finishes in common areas are typically vinyl composition tile. Floor finishes in assignable spaces is typically vinyl composition tile, carpet, and ceramic tile. Ceiling finishes in common areas are typically suspended acoustical tile. Ceiling finishes in assignable areas are typically suspended acoustical tile.

### D. SERVICES

**CONVEYING:** The building does not include conveying equipment. Conveying equipment includes no hydraulic elevators, and no wheelchair lifts.

**PLUMBING:** Plumbing fixtures are typically low-flow water fixtures with manual control valves. Domestic water distribution is combination of copper and galvanized steel with electric hot water heating. Sanitary waste system is cast iron. Rainwater drainage system is external with gutter systems.

**HVAC:** Heating is provided by gas fired boilers. Cooling system consists of a cooling tower supported by package units. The heating/cooling distribution system is a ductwork system utilizing air handling units. Ceiling mounted exhaust fans are installed in bathrooms and other required areas. Controls and instrumentation are digital and are centrally controlled by an energy management system. This building has a remote Building Automation System.

**FIRE PROTECTION:** The building does have a fire sprinkler system. The building does have a kitchen hood fire suppression system. Fire extinguishers and cabinets are distributed near fire exits and corridors.

**ELECTRICAL:** The main electrical service is fed from a pad mounted transformer to the main switchboard/distribution panel located in the building. Lighting is lay-in type, fluorescent light fixtures. Branch circuit wiring is typically copper serving electrical switches and receptacles. Emergency and life safety egress lighting systems are installed and exit signs are present at exit doors and near stairways and are typically illuminated.

**COMMUNICATIONS AND SECURITY:** The Silent Knight fire alarm system consists of audible/visual strobe annunciators in all common spaces. The system is activated by manual pull stations and smoke detectors and the system is centrally monitored. The telephone and data systems are segregated and include dedicated equipment closets. This building does have a local area network (LAN). The building includes an internal security system that is actuated by the following items: contacts, infrared, optical or a combination of all devices. The building has controlled entry doors access provided by card readers; entry doors are secured with magnetic door locks. The security system has CCTV cameras and is centrally monitored; this building has a public address and paging system combined with the telephone system.

**OTHER ELECTRICAL SYSTEMS:** This building does have a separately derived emergency power system. There is a natural gas emergency generator.

### E. EQUIPMENT & FURNISHINGS

This building includes the following items and equipment: fixed food service, library equipment, fixed casework, window treatment, floor grilles and mats, and multiple seating furnishings.

### G. SITE

Campus site features include paved driveways and parking lots, pedestrian pavement, flagpole, landscaping, play areas, covered walkways and fencing. Site mechanical and electrical features include water, sewer, natural gas and site lighting.

### CODE REVIEW

**ACCESSIBILITY:** The building is generally in compliance with applicable ADA requirements with respect to path of travel, interior and exterior doors, interior signage, and toilet room dimensions, fixtures, and fittings. Most building entrances appear to comply with ADA requirements.

**LIFE-SAFETY SYSTEMS:** The building is not covered with a wet sprinkler system. Fire extinguishers are located throughout the building. Power outlets in wet areas are GFIC protected. The fire alarm system includes detection devices, audio/visual alarms, and pull stations. Emergency/egress lighting is a combination of battery and special circuit systems. Illuminated exit signage is present in corridors and at exit doors. There is no fall protection at the roof.

## School Assessment Report - Heritage Academy

---

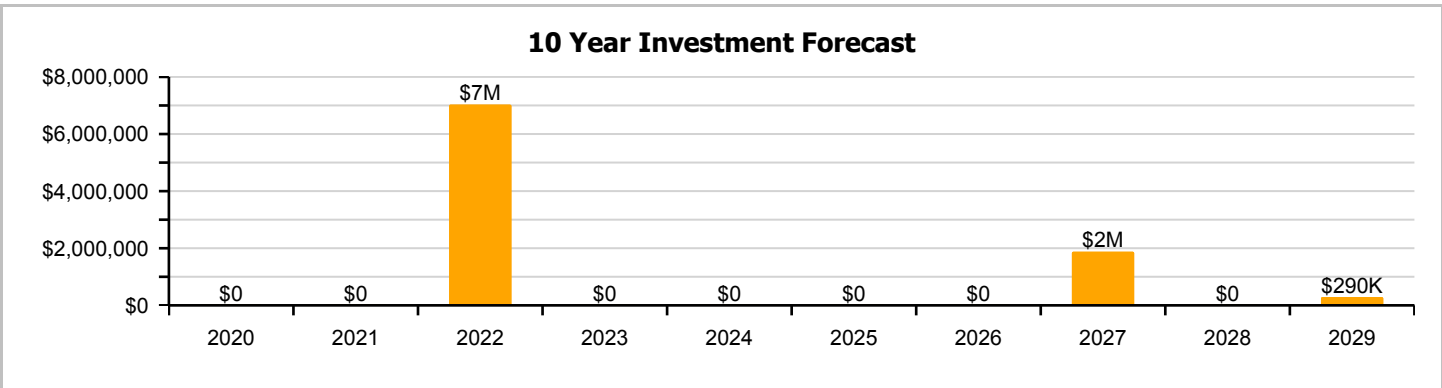
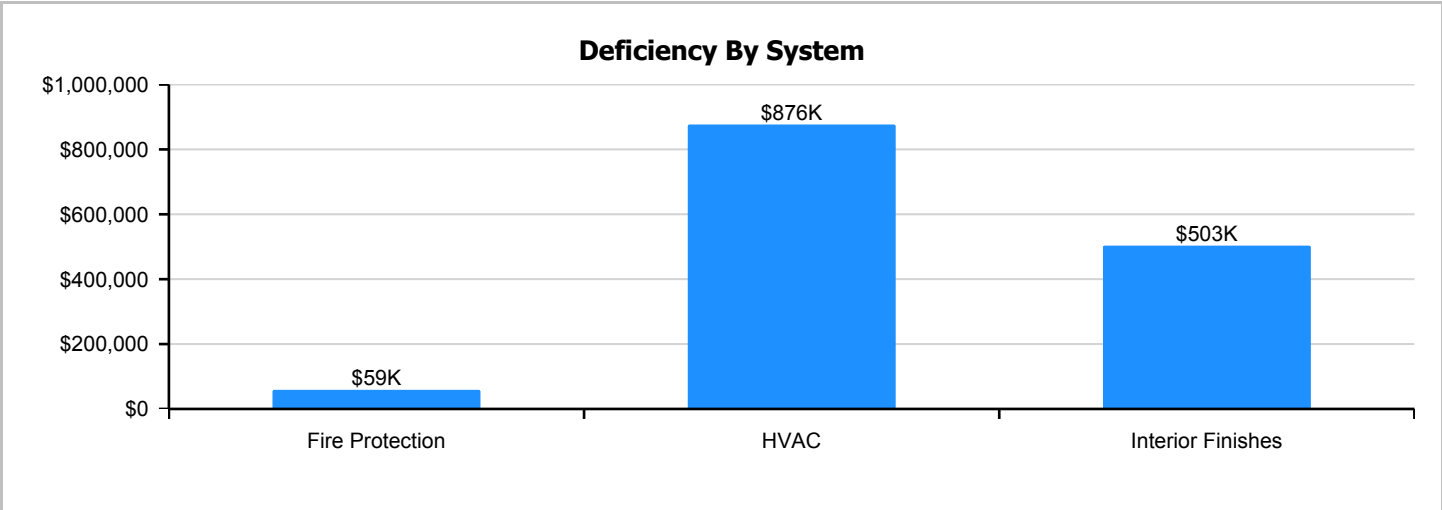
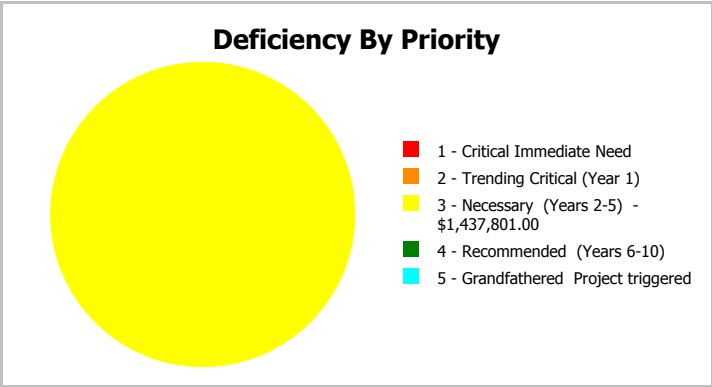
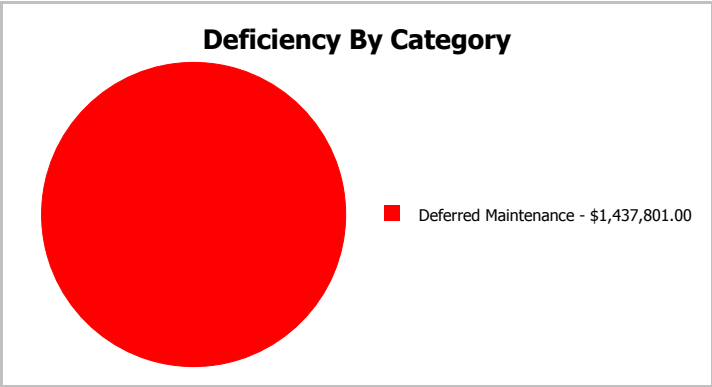
### Attributes:

#### General Attributes:

Arch Condition Assessor:	Jejuan Hall	MEP Condition Assessor:	Homero Guerrero
School Grades:	01, 02, 03, 04, 05, KK, PK	DOE Drawing Total GSF:	80997
DOE Facility Number:	0103	Total # of Modular/Portables:	0
DOE Interior Site SF:	80864	Total GSF of Modular/Portables:	0
Approx. Acres:	7	Status:	Active

**School Dashboard Summary**

Gross Area:	80,864	Last Renovation:	2002
Year Built:	2002	Replacement Value:	\$16,255,616
Repair Cost:	\$1,437,801	RSLI%:	40.14 %
FCI:	8.84 %		



## School Condition Summary

The Table below shows the RSLI and FCI for each major system shown at the UNIFORMAT II classification Level 2. Note that Systems with lower FCIs require less investment than systems with higher FCIs.

### Current Investment Requirement and Condition by Unifomat Classification

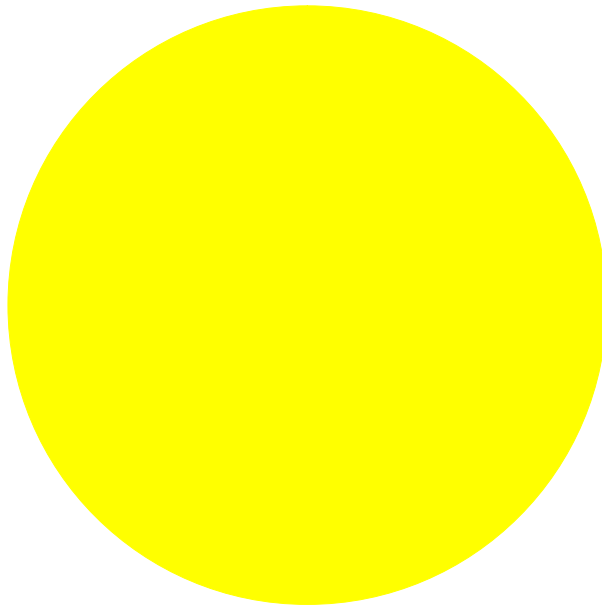
UNIFORMAT Classification	RSLI%	FCI %	Current Repair
A10 - Foundations	83.00 %	0.00 %	\$0.00
B10 - Superstructure	83.00 %	0.00 %	\$0.00
B20 - Exterior Enclosure	66.87 %	0.00 %	\$0.00
B30 - Roofing	32.84 %	0.00 %	\$0.00
C10 - Interior Construction	59.91 %	0.00 %	\$0.00
C30 - Interior Finishes	11.40 %	37.85 %	\$502,933.00
D20 - Plumbing	22.80 %	0.00 %	\$0.00
D30 - HVAC	11.05 %	32.78 %	\$876,161.00
D40 - Fire Protection	38.13 %	13.70 %	\$58,707.00
D50 - Electrical	17.61 %	0.00 %	\$0.00
E10 - Equipment	15.00 %	0.00 %	\$0.00
E20 - Furnishings	15.00 %	0.00 %	\$0.00
G20 - Site Improvements	41.01 %	0.00 %	\$0.00
G30 - Site Mechanical Utilities	66.00 %	0.00 %	\$0.00
G40 - Site Electrical Utilities	37.12 %	0.00 %	\$0.00
<b>Totals:</b>	<b>40.14 %</b>	<b>8.84 %</b>	<b>\$1,437,801.00</b>

### Condition Deficiency Priority

Facility Name	Gross Area (S.F.)	FCI %	1 - Critical Immediate Need	2 - Trending Critical (Year 1)	3 - Necessary (Years 2-5)	4 - Recommended (Years 6-10)	5 - Grandfathered Project triggered
2002 Bldg 2010	80,864	10.65	\$0.00	\$0.00	\$1,437,801.00	\$0.00	\$0.00
Site	80,864	0.00	\$0.00	\$0.00	\$0.00	\$0.00	\$0.00
<b>Total:</b>		<b>8.84</b>	<b>\$0.00</b>	<b>\$0.00</b>	<b>\$1,437,801.00</b>	<b>\$0.00</b>	<b>\$0.00</b>

### Deficiencies By Priority





- 1 - Critical Immediate Need
- 2 - Trending Critical (Year 1)
- 3 - Necessary (Years 2-5) - \$1,437,801.00
- 4 - Recommended (Years 6-10)
- 5 - Grandfathered Project triggered

**Budget Estimate Total: \$1,437,801.00**

**Executive Summary**

The condition of a Campus is the accumulation of the condition evaluations of the component buildings and the site. Building condition is evaluated based on the functional systems and elements of a building and organized according to the **UNIFORMAT II Elemental Classification**. eCOMET uses parametric estimating methodology whereby historical costs for systems, components and equipment are collected by entities such as RSMeans and converted to unit costs, typically \$/SF, and used to approximate future construction costs or replacement values. The grouping of these systems and elements and applying a current replacement value to them develops a representative building cost model. Cost Models are developed for similar building types and functions. Systems and their elements are evaluated based on their current replacement values, life cycles, installation dates and next renewal dates. Systems and their elements that are within their useful lives are further evaluated to identify current deficient conditions that may have a significant impact on a system's or element's remaining service life, and to determine if they are beyond their predicted expected life. The system's or element's current replacement value is based on RS Means Commercial Cost Data.

Following are the cost model's system details for this facility. The **Current Replacement Value (CRV)** is the amount needed to replace the property of the same present scope. The **Repair Cost** (the sum of the cost to repair/replace the Deficiencies) represents the budgeted contractor-installed costs plus owner's soft costs for the repair, replacement or renewal for a component or system level deficiency. It excludes contributing costs for other components or systems that might also be associated with the corrective actions due to packaging of the work. **Facility Condition Index (FCI)** is an industry-standard measurement of facility condition calculated as the ratio of the costs to correct a facility's deficiencies (Condition Needs) to the facility's Current Replacement Value. It ranges from 0% (new) to 100% (very poor - beyond service life). The **Remaining Service Life Index (RSLI)** is calculated as the sum of a renewable system's **Remaining Service Life (RSL)** divided by the sum of a system's Replacement Value (both values exclude soft-cost to simplify calculation updates) expressed as a percentage ranging from 100% (new) to 0% (expired). The relationship between the key metrics FCI and RSLI is an important indicator, at either the facility, building, system, or component levels, of the condition trend and the imminent need for capital renewal. These indices exist in an inverse relationship wherein the FCI increases when systems reach their expected life-cycle age, whereas the RSLI decreases annually indicating the relative time remaining before reaching the life-cycle expiration age. For example, a facility or a system with a high RSLI and a low FCI indicates it is in the early portion of its useful life. However, a low RSLI indicates that expiration dates are approaching at which point the FCI would increase. The term **FCA Score** is the inverse of Total FCI and calculated as 100-Total FCI (without the %) where 100 is best and 0 is worst condition.

Function:	Elementary
Gross Area (SF):	80,864
Year Built:	2002
Last Renovation:	2002
Replacement Value:	\$13,505,107
Repair Cost:	\$1,437,801.00
Total FCI:	10.65 %
Total RSLI:	39.49 %
FCA Score:	89.35



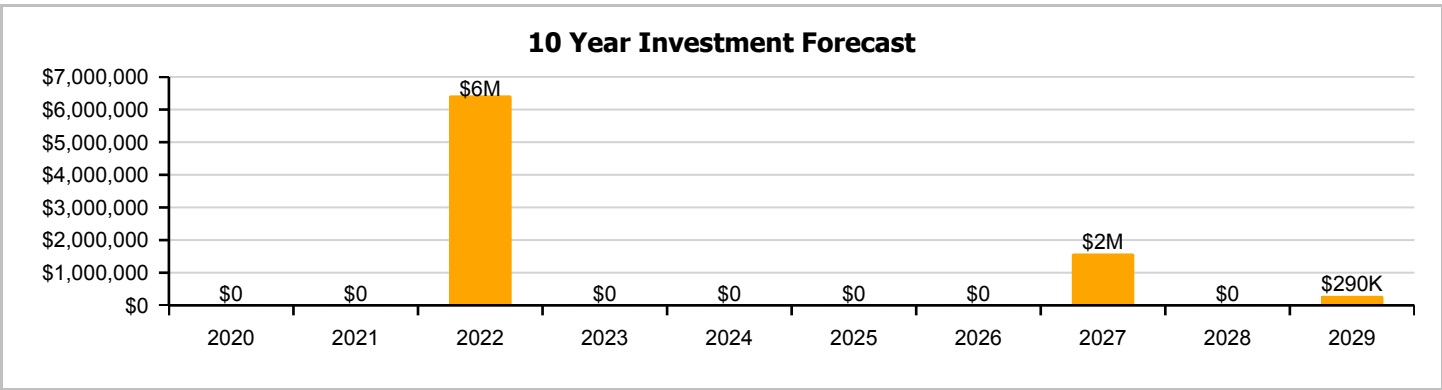
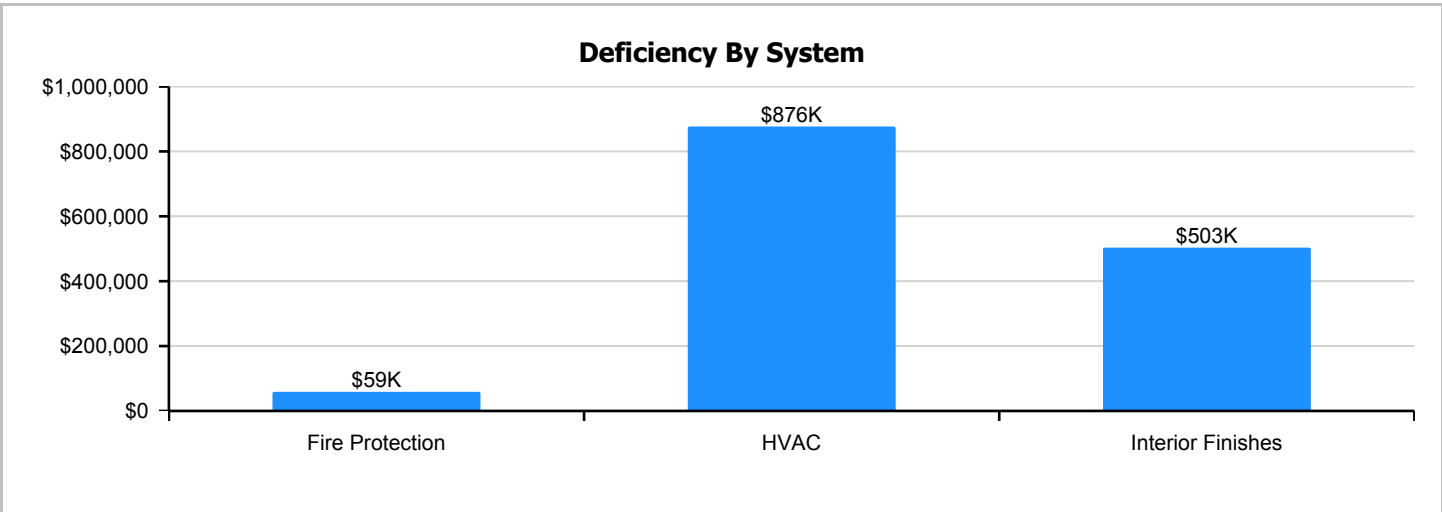
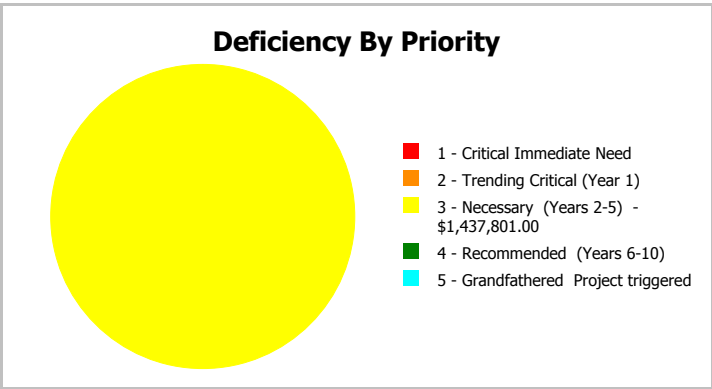
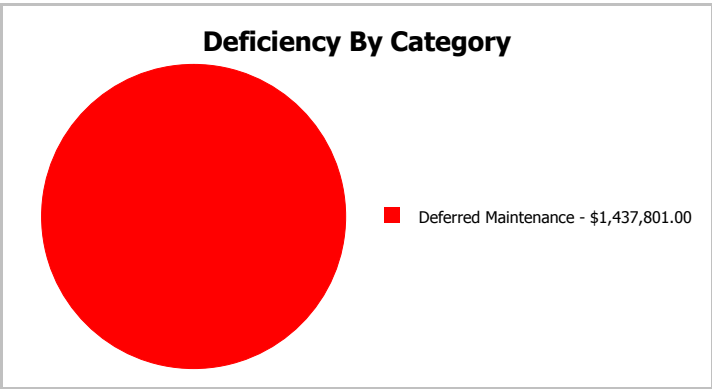
**Description:**

The narrative for this building is included in the Executive Summary Description at the front of this report.

**Attributes:** This asset has no attributes.

## Dashboard Summary

Function:	Elementary	Gross Area:	80,864
Year Built:	2002	Last Renovation:	2002
Repair Cost:	\$1,437,801	Replacement Value:	\$13,505,107
FCI:	10.65 %	RSLI%:	39.49 %



## Condition Summary

The Table below shows the RSLI and FCI for each major building system shown at the UNIFORMAT II classification Level 2. Note that Systems with lower FCIs require less investment than systems with higher FCIs.

UNIFORMAT Classification	RSLI %	FCI %	Current Repair Cost
A10 - Foundations	83.00 %	0.00 %	\$0.00
B10 - Superstructure	83.00 %	0.00 %	\$0.00
B20 - Exterior Enclosure	66.87 %	0.00 %	\$0.00
B30 - Roofing	32.84 %	0.00 %	\$0.00
C10 - Interior Construction	59.91 %	0.00 %	\$0.00
C30 - Interior Finishes	11.40 %	37.85 %	\$502,933.00
D20 - Plumbing	22.80 %	0.00 %	\$0.00
D30 - HVAC	11.05 %	32.78 %	\$876,161.00
D40 - Fire Protection	38.13 %	13.70 %	\$58,707.00
D50 - Electrical	17.61 %	0.00 %	\$0.00
E10 - Equipment	15.00 %	0.00 %	\$0.00
E20 - Furnishings	15.00 %	0.00 %	\$0.00
<b>Totals:</b>	<b>39.49 %</b>	<b>10.65 %</b>	<b>\$1,437,801.00</b>

## Photo Album

The photo album consists of the various cardinal compass directions of the building..

1). Northeast Elevation - Jan 14, 2020



2). Northeast Elevation - Jan 14, 2020



3). East Elevation - Jan 14, 2020



4). East Elevation - Jan 14, 2020



5). East Elevation - Jan 14, 2020



6). East Elevation - Jan 14, 2020



7). Courtyard Elevation - Jan 14, 2020



8). Southeast Elevation - Jan 14, 2020



9). South Elevation - Jan 14, 2020



10). South Elevation - Jan 14, 2020



11). South Elevation - Jan 14, 2020



12). West Elevation - Jan 14, 2020





## Condition Detail

This section of the report contains results of the Facility Condition Assessment. The building is separated into system components based on UNIFORMAT II. The columns in the System Listing table represent the following:

1. System Code: A code that identifies the system.
2. System Description: A brief description of a system present in the building.
3. Unit Price \$: The unit price of the system.
4. UoM: The unit of measure of the system.
5. Qty: The quantity for the system
6. Life: Building Owners and Managers Association (BOMA) recommended system design life.
7. Year Installed: The date of system installation.
8. Calc Next Renewal Year: The date of system expiration based on the life, NR stands for non renewable.
9. Next Renewal Year: The suggested system expiration date by the assessor based on visual inspection.
10. RSLI: The Remaining Service Life Index of the system.
11. FCI: The Facility Condition Index of the system.
12. RSL: Remaining Service Life in years.
13. eCR: eCOMET Condition Rating (not used in this assessment)
14. Deficiency \$: The financial investment to repair/replace system to address deficiency.
15. Replacement Value \$: The replacement cost of the system as new construction.

## System Listing

The System Listing table below lists each of the systems organized by their UNIFORMAT II classification. The assessment team was tasked with recording the most recent replacement year of each system, determining the remaining service life based on the theoretical life, and evaluating the condition to confirm the forecast next replacement year. The system listing is the basis for all data contained in the Building Assessment Report.



School Assessment Report - 2002 Bldg 2010

System Code	System Description	Unit Price \$	UoM	Qty	Life	Year Installed	Calc Next Renewal Year	Next Renewal Year	RSLI%	FCI%	RSL	eCR	Deficiency \$	Replacement Value \$
A1010	Standard Foundations	\$8.19	S.F.	80,864	100	2002	2102		83.00 %	0.00 %	83			\$662,276
A1030	Slab on Grade	\$6.92	S.F.	80,864	100	2002	2102		83.00 %	0.00 %	83			\$559,579
B1020	Roof Construction	\$13.46	S.F.	80,864	100	2002	2102		83.00 %	0.00 %	83			\$1,088,429
B2010	Exterior Walls	\$15.36	S.F.	80,864	100	2002	2102		83.00 %	0.00 %	83			\$1,242,071
B2020	Exterior Windows	\$9.57	S.F.	80,864	30	2002	2032		43.33 %	0.00 %	13			\$773,868
B2030	Exterior Doors	\$0.96	S.F.	80,864	30	2002	2032		43.33 %	0.00 %	13			\$77,629
B3010105	Built-Up	\$7.15	S.F.	80,864	25	2002	2027		32.00 %	0.00 %	8			\$578,178
B3020	Roof Openings	\$0.57	S.F.	80,864	30	2002	2032		43.33 %	0.00 %	13			\$46,092
C1010	Partitions	\$6.22	S.F.	80,864	100	2002	2102		83.00 %	0.00 %	83			\$502,974
C1020	Interior Doors	\$4.05	S.F.	80,864	40	2002	2042		57.50 %	0.00 %	23			\$327,499
C1030	Fittings	\$2.98	S.F.	80,864	20	2002	2022		15.00 %	0.00 %	3			\$240,975
C3010220	Tile	\$9.25	S.F.	2,000	30	2002	2032		43.33 %	0.00 %	13			\$18,500
C3010230	Paint & Covering	\$1.47	S.F.	78,864	10	2002	2012		0.00 %	0.00 %	-7			\$115,930
C3020420	Ceramic Tile	\$16.74	S.F.	2,000	50	2002	2052		66.00 %	0.00 %	33			\$33,480
C3020901	Carpet	\$7.50	S.F.	2,000	8	2002	2010		0.00 %	110.00 %	-9		\$16,500.00	\$15,000
C3020903	VCT	\$3.48	S.F.	73,864	15	2002	2017		0.00 %	155.00 %	-2		\$398,422.00	\$257,047
C3020999	Other - Rubber or Neoprene	\$26.67	S.F.	3,000	10	2002	2012		0.00 %	110.00 %	-7		\$88,011.00	\$80,010
C3030	Ceiling Finishes	\$10.00	S.F.	80,864	20	2002	2022		15.00 %	0.00 %	3			\$808,640
D2010	Plumbing Fixtures	\$7.06	S.F.	80,864	20	2002	2022		15.00 %	0.00 %	3			\$570,900
D2020	Domestic Water Distribution	\$0.79	S.F.	80,864	30	2002	2032		43.33 %	0.00 %	13			\$63,883
D2030	Sanitary Waste	\$1.89	S.F.	80,864	30	2002	2032		43.33 %	0.00 %	13			\$152,833
D3010	Energy Supply	\$0.61	S.F.	80,864	30	2002	2032		43.33 %	0.00 %	13			\$49,327
D3020	Heat Generating Systems	\$4.00	S.F.	80,864	20	2002	2022		15.00 %	0.00 %	3			\$323,456
D3030	Cooling Generating Systems	\$6.78	S.F.	80,864	20	2002	2022		15.00 %	0.00 %	3			\$548,258
D3040	Distribution Systems	\$11.81	S.F.	80,864	20	2002	2022		15.00 %	0.00 %	3			\$955,004
D3050	Terminal & Package Units	\$7.39	S.F.	80,864	15	2002	2017		0.00 %	110.00 %	-2		\$657,343.00	\$597,585
D3060	Controls & Instrumentation	\$2.46	S.F.	80,864	15	2002	2017		0.00 %	110.00 %	-2		\$218,818.00	\$198,925
D4010	Sprinklers	\$4.54	S.F.	80,864	30	2002	2032		43.33 %	0.00 %	13			\$367,123
D4030	Fire Protection Specialties	\$0.10	S.F.	80,864	15	2012	2027		53.33 %	0.00 %	8			\$8,086
D4090	Other Fire Protection Systems	\$0.66	S.F.	80,864	15	2002	2017		0.00 %	110.00 %	-2		\$58,707.00	\$53,370
D5010	Electrical Service/Distribution	\$2.55	S.F.	80,864	20	2002	2022		15.00 %	0.00 %	3			\$206,203
D5020	Branch Wiring	\$5.28	S.F.	80,864	20	2002	2022		15.00 %	0.00 %	3			\$426,962
D5020	Lighting	\$7.92	S.F.	80,864	20	2002	2022		15.00 %	0.00 %	3			\$640,443
D5030810	Security & Detection Systems	\$1.51	S.F.	80,864	20	2002	2022		15.00 %	0.00 %	3			\$122,105
D5030910	Fire Alarm Systems	\$2.74	S.F.	80,864	20	2002	2022		15.00 %	0.00 %	3			\$221,567
D5030920	Data Communication	\$3.56	S.F.	80,864	25	2002	2027		32.00 %	0.00 %	8			\$287,876
D5090	Other Electrical Systems	\$0.38	S.F.	80,864	15	2002	2017	2022	20.00 %	0.00 %	3			\$30,728
E1020	Institutional Equipment	\$0.10	S.F.	80,864	20	2002	2022		15.00 %	0.00 %	3			\$8,086
E1090	Other Equipment	\$0.87	S.F.	80,864	20	2002	2022		15.00 %	0.00 %	3			\$70,352
E2010	Fixed Furnishings	\$2.15	S.F.	80,864	20	2002	2022		15.00 %	0.00 %	3			\$173,858
<b>Total</b>									<b>39.49 %</b>	<b>10.65 %</b>			<b>\$1,437,801.00</b>	<b>\$13,505,107</b>



## System Notes

The facility description in the executive summary contains an overview of each system. The system notes listed below provide additional information on select systems found within the facility.

**System:** B2010 - Exterior Walls



**Note:**

**System:** B2020 - Exterior Windows



**Note:**

**System:** B2030 - Exterior Doors



**Note:**

# School Assessment Report - 2002 Bldg 2010

**System:** B3010105 - Built-Up



**Note:**

**System:** B3020 - Roof Openings



**Note:**

**System:** C1010 - Partitions



**Note:**

# School Assessment Report - 2002 Bldg 2010

**System:** C1020 - Interior Doors



**Note:**

**System:** C1030 - Fittings



**Note:**

**System:** C3010220 - Tile



**Note:**

# School Assessment Report - 2002 Bldg 2010

**System:** C3010230 - Paint & Covering



**Note:**

**System:** C3020420 - Ceramic Tile



**Note:**

**System:** C3020901 - Carpet



**Note:**

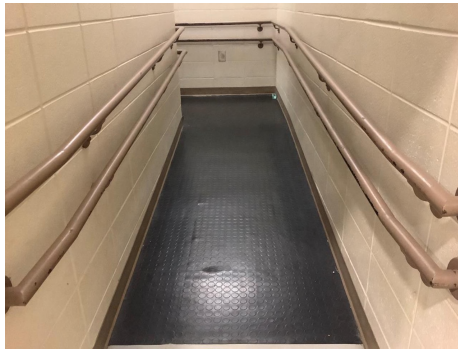
# School Assessment Report - 2002 Bldg 2010

**System:** C3020903 - VCT



**Note:**

**System:** C3020999 - Other - Rubber or Neoprene



**Note:**

**System:** C3030 - Ceiling Finishes



**Note:**

# School Assessment Report - 2002 Bldg 2010

## System: D2010 - Plumbing Fixtures



### Note:

## System: D2020 - Domestic Water Distribution



### Note:

## System: D2030 - Sanitary Waste



### Note:



## School Assessment Report - 2002 Bldg 2010

**System:** D3010 - Energy Supply



**Note:**

**System:** D3020 - Heat Generating Systems



**Note:**

**System:** D3030 - Cooling Generating Systems



**Note:**



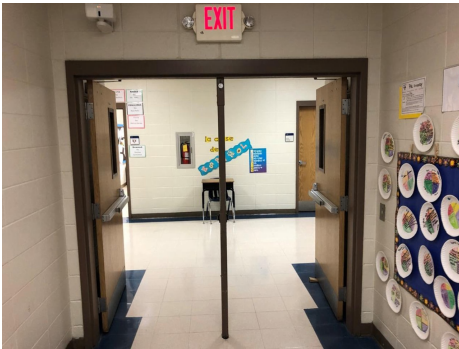
# School Assessment Report - 2002 Bldg 2010

**System:** D4010 - Sprinklers



**Note:**

**System:** D4030 - Fire Protection Specialties



**Note:**

**System:** D4090 - Other Fire Protection Systems



**Note:**

# School Assessment Report - 2002 Bldg 2010

**System:** D5010 - Electrical Service/Distribution



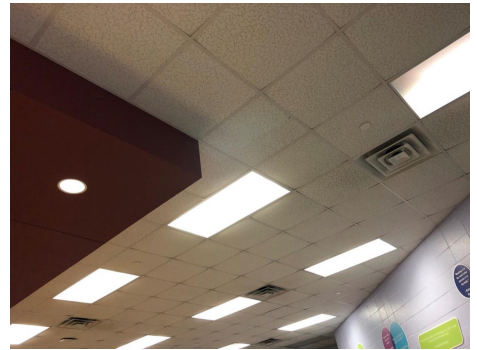
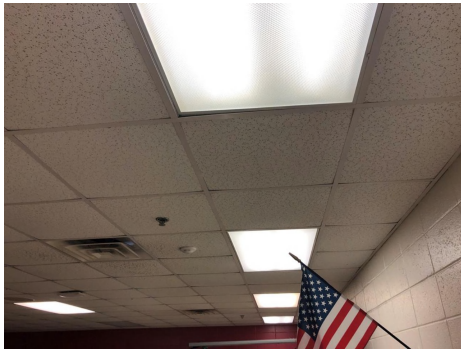
**Note:**

**System:** D5020 - Branch Wiring



**Note:**

**System:** D5020 - Lighting



**Note:**

## School Assessment Report - 2002 Bldg 2010

**System:** D5030810 - Security & Detection Systems



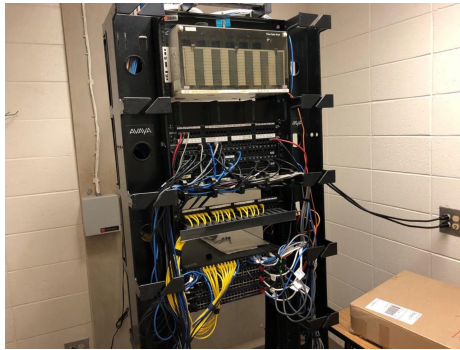
**Note:**

**System:** D5030910 - Fire Alarm Systems



**Note:**

**System:** D5030920 - Data Communication



**Note:**

## School Assessment Report - 2002 Bldg 2010

**System:** D5090 - Other Electrical Systems



**Note:**

**System:** E1020 - Institutional Equipment



**Note:**

**System:** E1090 - Other Equipment



**Note:**

# School Assessment Report - 2002 Bldg 2010

**System:** E2010 - Fixed Furnishings



**Note:**

## Renewal Schedule

eCOMET forecasts future Capital Renewal projects for expiring systems based on the Calculated Next Renewal year found in the System Listing table. There is a 3% yearly inflation factor applied to the system costs expiring in the future. The table below reflects Capital Renewal projects over the next 10 years. Note: Blank cells (or \$0) indicate no systems are scheduled for renewal in that year.

*Inflation Rate: 3%*

System	Current Deficiencies	2020	2021	2022	2023	2024	2025	2026	2027	2028	2029	Total
<b>Total:</b>	<b>\$1,437,801</b>	<b>\$0</b>	<b>\$0</b>	<b>\$6,427,737</b>	<b>\$0</b>	<b>\$0</b>	<b>\$0</b>	<b>\$0</b>	<b>\$1,583,205</b>	<b>\$0</b>	<b>\$289,660</b>	<b>\$9,738,403</b>
<b>* A - Substructure</b>	\$0	\$0	\$0	\$0	\$0	\$0	\$0	\$0	\$0	\$0	\$0	\$0
<b>* A10 - Foundations</b>	\$0	\$0	\$0	\$0	\$0	\$0	\$0	\$0	\$0	\$0	\$0	\$0
<b>* A1010 - Standard Foundations</b>	\$0	\$0	\$0	\$0	\$0	\$0	\$0	\$0	\$0	\$0	\$0	\$0
<b>* A1030 - Slab on Grade</b>	\$0	\$0	\$0	\$0	\$0	\$0	\$0	\$0	\$0	\$0	\$0	\$0
<b>B - Shell</b>	\$0	\$0	\$0	\$0	\$0	\$0	\$0	\$0	\$0	\$0	\$0	\$0
<b>B10 - Superstructure</b>	\$0	\$0	\$0	\$0	\$0	\$0	\$0	\$0	\$0	\$0	\$0	\$0
<b>* B1020 - Roof Construction</b>	\$0	\$0	\$0	\$0	\$0	\$0	\$0	\$0	\$0	\$0	\$0	\$0
<b>B20 - Exterior Enclosure</b>	\$0	\$0	\$0	\$0	\$0	\$0	\$0	\$0	\$0	\$0	\$0	\$0
<b>* B2010 - Exterior Walls</b>	\$0	\$0	\$0	\$0	\$0	\$0	\$0	\$0	\$0	\$0	\$0	\$0
<b>B2020 - Exterior Windows</b>	\$0	\$0	\$0	\$0	\$0	\$0	\$0	\$0	\$0	\$0	\$0	\$0
<b>B2030 - Exterior Doors</b>	\$0	\$0	\$0	\$0	\$0	\$0	\$0	\$0	\$0	\$0	\$0	\$0
<b>B30 - Roofing</b>	\$0	\$0	\$0	\$0	\$0	\$0	\$0	\$0	\$0	\$0	\$0	\$0
<b>B3010 - Roof Coverings</b>	\$0	\$0	\$0	\$0	\$0	\$0	\$0	\$0	\$0	\$0	\$0	\$0
<b>B3010105 - Built-Up</b>	\$0	\$0	\$0	\$0	\$0	\$0	\$0	\$0	\$1,149,897	\$0	\$0	\$1,149,897
<b>B3020 - Roof Openings</b>	\$0	\$0	\$0	\$0	\$0	\$0	\$0	\$0	\$0	\$0	\$0	\$0
<b>C - Interiors</b>	\$0	\$0	\$0	\$0	\$0	\$0	\$0	\$0	\$0	\$0	\$0	\$0
<b>C10 - Interior Construction</b>	\$0	\$0	\$0	\$0	\$0	\$0	\$0	\$0	\$0	\$0	\$0	\$0
<b>C1010 - Partitions</b>	\$0	\$0	\$0	\$0	\$0	\$0	\$0	\$0	\$0	\$0	\$0	\$0
<b>C1020 - Interior Doors</b>	\$0	\$0	\$0	\$0	\$0	\$0	\$0	\$0	\$0	\$0	\$0	\$0
<b>C1030 - Fittings</b>	\$0	\$0	\$0	\$289,651	\$0	\$0	\$0	\$0	\$0	\$0	\$0	\$289,651
<b>C30 - Interior Finishes</b>	\$0	\$0	\$0	\$0	\$0	\$0	\$0	\$0	\$0	\$0	\$0	\$0
<b>C3010 - Wall Finishes</b>	\$0	\$0	\$0	\$0	\$0	\$0	\$0	\$0	\$0	\$0	\$0	\$0
<b>C3010220 - Tile</b>	\$0	\$0	\$0	\$0	\$0	\$0	\$0	\$0	\$0	\$0	\$0	\$0
<b>C3010230 - Paint &amp; Covering</b>	\$0	\$0	\$0	\$0	\$0	\$0	\$0	\$0	\$0	\$0	\$171,380	\$171,380
<b>C3020 - Floor Finishes</b>	\$0	\$0	\$0	\$0	\$0	\$0	\$0	\$0	\$0	\$0	\$0	\$0



# School Assessment Report - 2002 Bldg 2010

System	Current Deficiencies	2020	2021	2022	2023	2024	2025	2026	2027	2028	2029	Total
C3020420 - Ceramic Tile	\$0	\$0	\$0	\$0	\$0	\$0	\$0	\$0	\$0	\$0	\$0	\$0
C3020901 - Carpet	\$16,500	\$0	\$0	\$0	\$0	\$0	\$0	\$0	\$20,902	\$0	\$0	\$37,402
C3020903 - VCT	\$398,422	\$0	\$0	\$0	\$0	\$0	\$0	\$0	\$0	\$0	\$0	\$398,422
C3020999 - Other - Rubber or Neoprene	\$88,011	\$0	\$0	\$0	\$0	\$0	\$0	\$0	\$0	\$0	\$118,279	\$206,290
C3030 - Ceiling Finishes	\$0	\$0	\$0	\$971,985	\$0	\$0	\$0	\$0	\$0	\$0	\$0	\$971,985
D - Services	\$0	\$0	\$0	\$0	\$0	\$0	\$0	\$0	\$0	\$0	\$0	\$0
D20 - Plumbing	\$0	\$0	\$0	\$0	\$0	\$0	\$0	\$0	\$0	\$0	\$0	\$0
D2010 - Plumbing Fixtures	\$0	\$0	\$0	\$686,222	\$0	\$0	\$0	\$0	\$0	\$0	\$0	\$686,222
D2020 - Domestic Water Distribution	\$0	\$0	\$0	\$0	\$0	\$0	\$0	\$0	\$0	\$0	\$0	\$0
D2030 - Sanitary Waste	\$0	\$0	\$0	\$0	\$0	\$0	\$0	\$0	\$0	\$0	\$0	\$0
D30 - HVAC	\$0	\$0	\$0	\$0	\$0	\$0	\$0	\$0	\$0	\$0	\$0	\$0
D3010 - Energy Supply	\$0	\$0	\$0	\$0	\$0	\$0	\$0	\$0	\$0	\$0	\$0	\$0
D3020 - Heat Generating Systems	\$0	\$0	\$0	\$388,794	\$0	\$0	\$0	\$0	\$0	\$0	\$0	\$388,794
D3030 - Cooling Generating Systems	\$0	\$0	\$0	\$659,006	\$0	\$0	\$0	\$0	\$0	\$0	\$0	\$659,006
D3040 - Distribution Systems	\$0	\$0	\$0	\$1,147,914	\$0	\$0	\$0	\$0	\$0	\$0	\$0	\$1,147,914
D3050 - Terminal & Package Units	\$657,343	\$0	\$0	\$0	\$0	\$0	\$0	\$0	\$0	\$0	\$0	\$657,343
D3060 - Controls & Instrumentation	\$218,818	\$0	\$0	\$0	\$0	\$0	\$0	\$0	\$0	\$0	\$0	\$218,818
D40 - Fire Protection	\$0	\$0	\$0	\$0	\$0	\$0	\$0	\$0	\$0	\$0	\$0	\$0
D4010 - Sprinklers	\$0	\$0	\$0	\$0	\$0	\$0	\$0	\$0	\$0	\$0	\$0	\$0
D4030 - Fire Protection Specialties	\$0	\$0	\$0	\$0	\$0	\$0	\$0	\$0	\$11,268	\$0	\$0	\$11,268
D4090 - Other Fire Protection Systems	\$58,707	\$0	\$0	\$0	\$0	\$0	\$0	\$0	\$0	\$0	\$0	\$58,707
D50 - Electrical	\$0	\$0	\$0	\$0	\$0	\$0	\$0	\$0	\$0	\$0	\$0	\$0
D5010 - Electrical Service/Distribution	\$0	\$0	\$0	\$247,857	\$0	\$0	\$0	\$0	\$0	\$0	\$0	\$247,857
D5020 - Branch Wiring	\$0	\$0	\$0	\$513,208	\$0	\$0	\$0	\$0	\$0	\$0	\$0	\$513,208
D5020 - Lighting	\$0	\$0	\$0	\$769,812	\$0	\$0	\$0	\$0	\$0	\$0	\$0	\$769,812
D5030 - Communications and Security	\$0	\$0	\$0	\$0	\$0	\$0	\$0	\$0	\$0	\$0	\$0	\$0
D5030810 - Security & Detection Systems	\$0	\$0	\$0	\$146,770	\$0	\$0	\$0	\$0	\$0	\$0	\$0	\$146,770
D5030910 - Fire Alarm Systems	\$0	\$0	\$0	\$266,324	\$0	\$0	\$0	\$0	\$0	\$0	\$0	\$266,324
D5030920 - Data Communication	\$0	\$0	\$0	\$0	\$0	\$0	\$0	\$0	\$401,139	\$0	\$0	\$401,139
D5090 - Other Electrical Systems	\$0	\$0	\$0	\$36,935	\$0	\$0	\$0	\$0	\$0	\$0	\$0	\$36,935
E - Equipment & Furnishings	\$0	\$0	\$0	\$0	\$0	\$0	\$0	\$0	\$0	\$0	\$0	\$0
E10 - Equipment	\$0	\$0	\$0	\$0	\$0	\$0	\$0	\$0	\$0	\$0	\$0	\$0

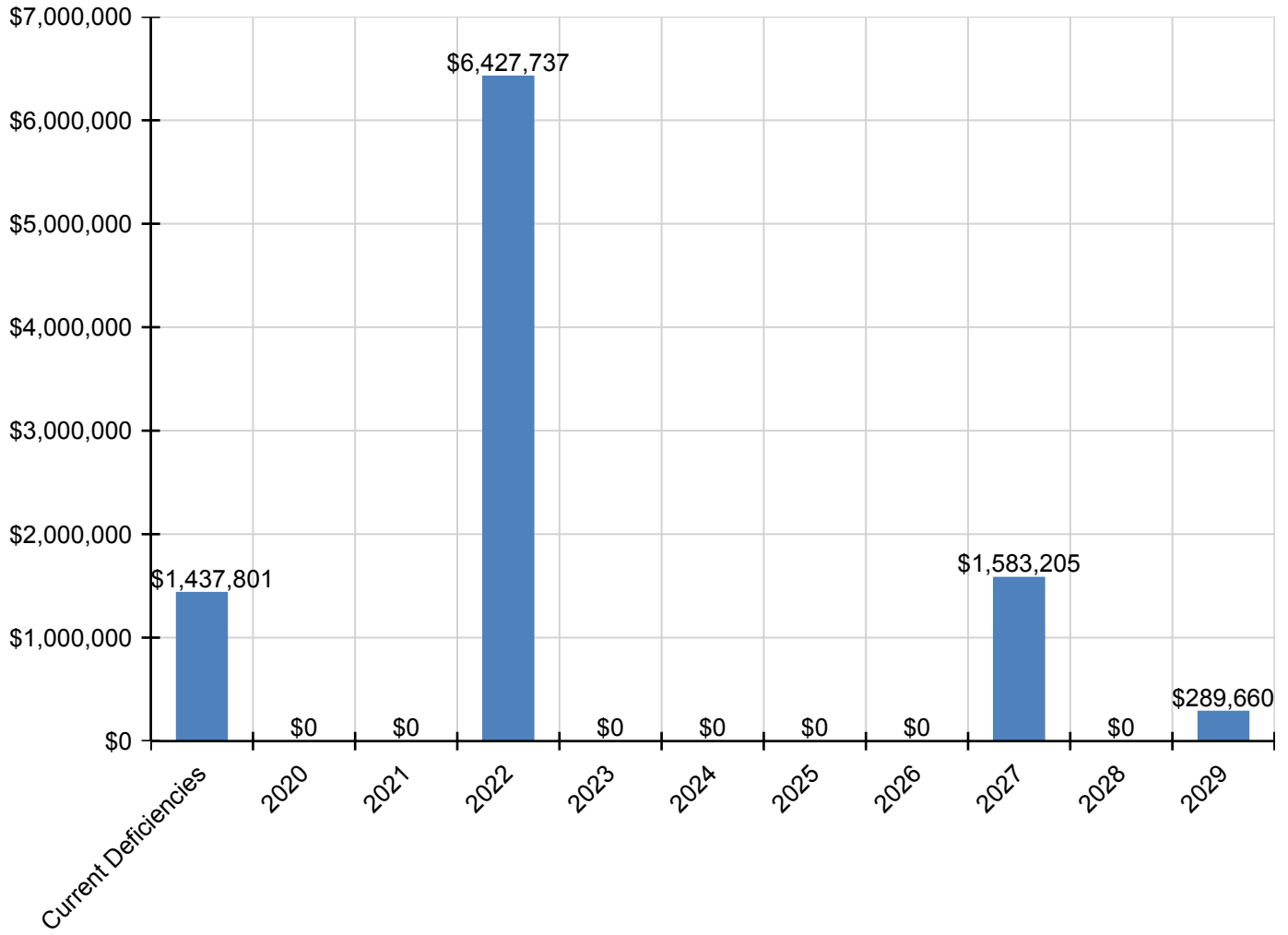
## School Assessment Report - 2002 Bldg 2010

System	Current Deficiencies	2020	2021	2022	2023	2024	2025	2026	2027	2028	2029	Total
<b>E1020 - Institutional Equipment</b>	\$0	\$0	\$0	\$9,720	\$0	\$0	\$0	\$0	\$0	\$0	\$0	<b>\$9,720</b>
<b>E1090 - Other Equipment</b>	\$0	\$0	\$0	\$84,563	\$0	\$0	\$0	\$0	\$0	\$0	\$0	<b>\$84,563</b>
<b>E20 - Furnishings</b>	\$0	\$0	\$0	\$0	\$0	\$0	\$0	\$0	\$0	\$0	\$0	<b>\$0</b>
<b>E2010 - Fixed Furnishings</b>	\$0	\$0	\$0	\$208,976	\$0	\$0	\$0	\$0	\$0	\$0	\$0	<b>\$208,976</b>

\* Indicates non-renewable system

## Forecasted Capital Renewal Requirement

The following chart shows the current building deficiencies and forecasted capital renewal (sustainment) requirements over the next ten years.

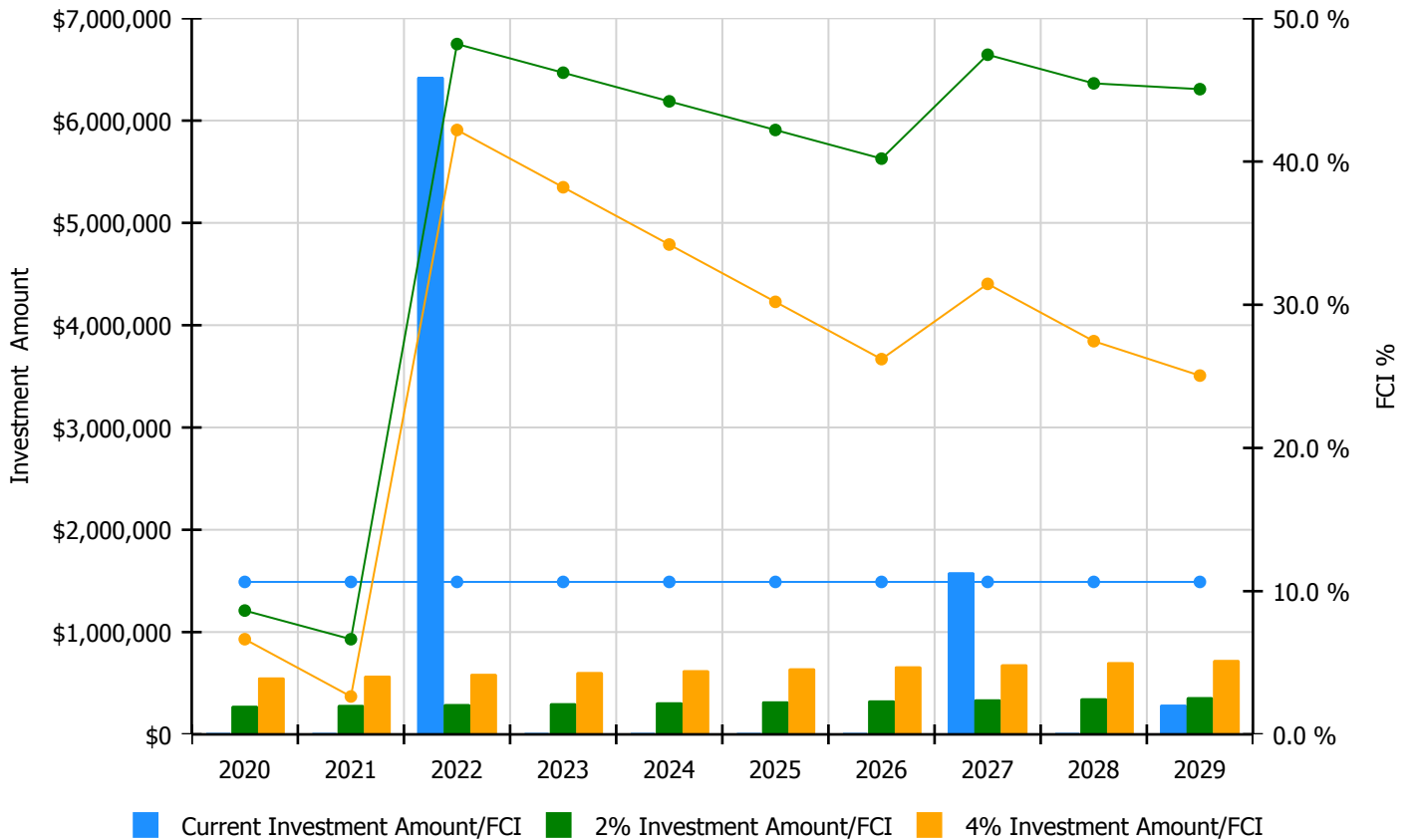


## Condition Index Forecast by Investment Scenario

The chart below illustrates the effect of various investment levels on the building FCI for the next 10 years. The levels of investment shown below include:

- Current FCI: a variable investment amount based on renewing expired systems to maintain the current FCI for the building
- 2% Investment: an annual investment of 2% of the replacement value of the building, escalated for inflation
- 4% Investment: an annual investment of 4% of the replacement value of the building, escalated for inflation

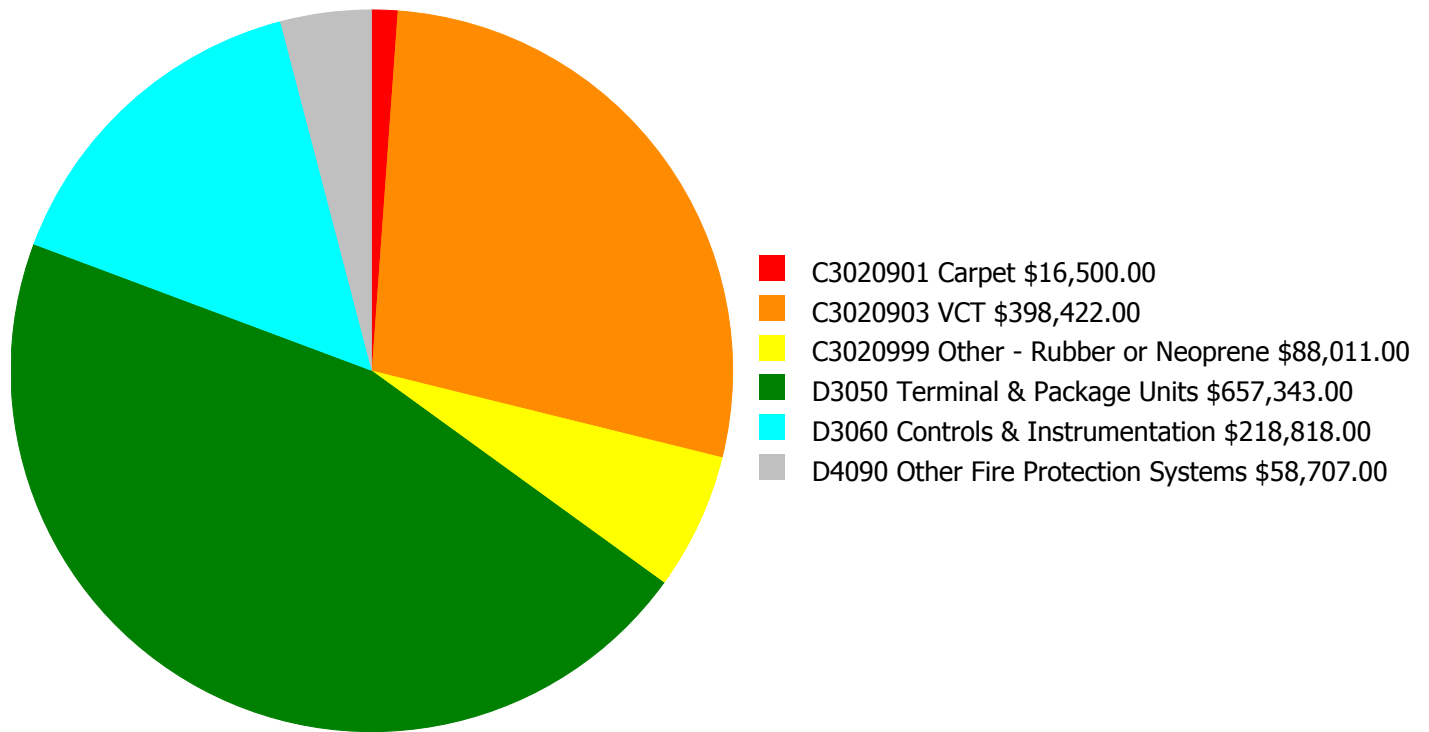
**Facility Investment vs. FCI Forecast**



Year	Investment Amount Current FCI - 10.65%	2% Investment		4% Investment	
		Amount	FCI	Amount	FCI
2020	\$0	\$278,205.00	8.65 %	\$556,410.00	6.65 %
2021	\$0	\$286,551.00	6.65 %	\$573,103.00	2.65 %
2022	\$6,427,737	\$295,148.00	48.20 %	\$590,296.00	42.20 %
2023	\$0	\$304,002.00	46.20 %	\$608,005.00	38.20 %
2024	\$0	\$313,122.00	44.20 %	\$626,245.00	34.20 %
2025	\$0	\$322,516.00	42.20 %	\$645,032.00	30.20 %
2026	\$0	\$332,192.00	40.20 %	\$664,383.00	26.20 %
2027	\$1,583,205	\$342,157.00	47.46 %	\$684,315.00	31.46 %
2028	\$0	\$352,422.00	45.46 %	\$704,844.00	27.46 %
2029	\$289,660	\$362,995.00	45.05 %	\$725,989.00	25.05 %
<b>Total:</b>	<b>\$8,300,602</b>	<b>\$3,189,310.00</b>		<b>\$6,378,622.00</b>	

## Deficiency Summary by System

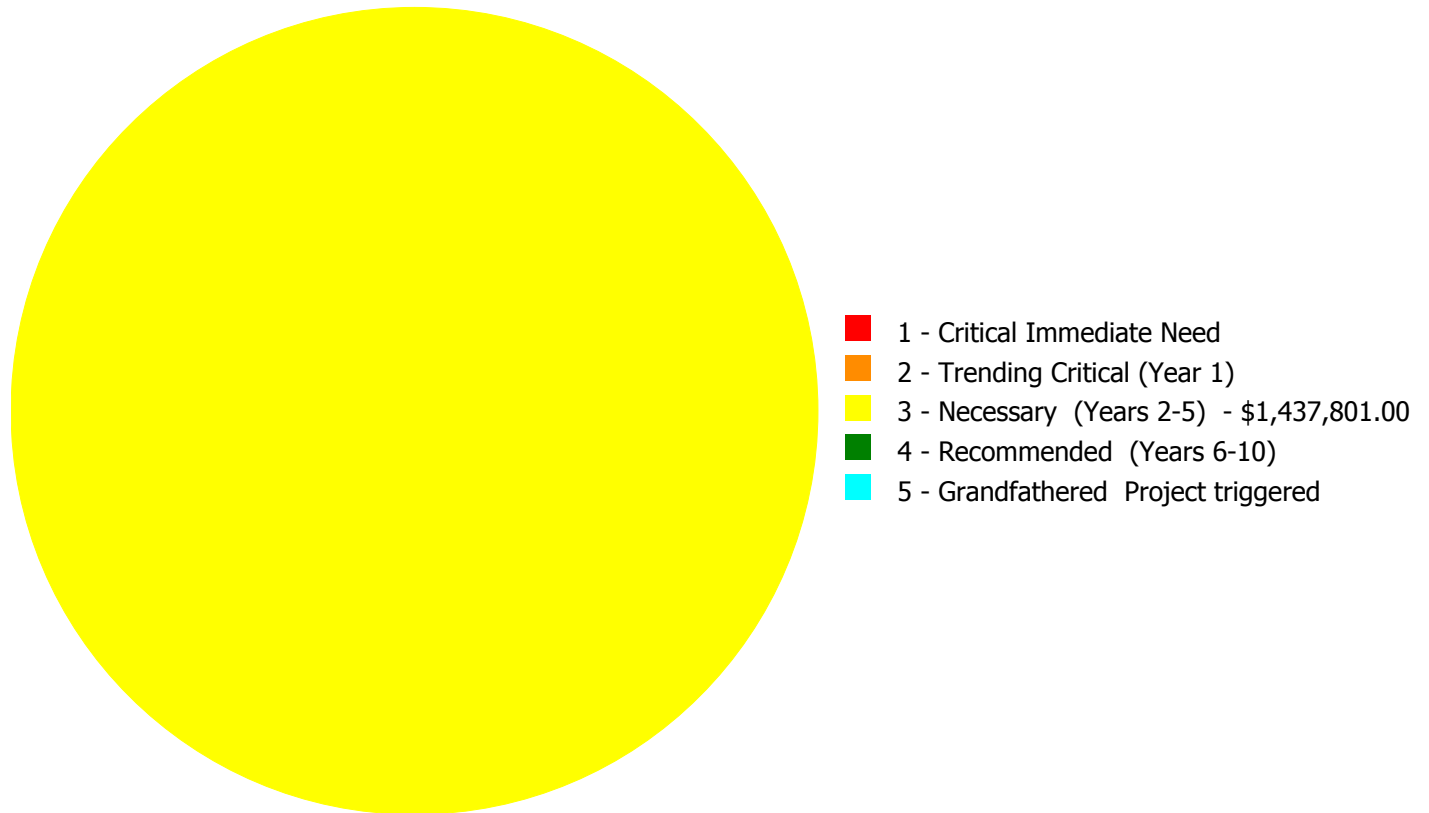
Current deficiencies included assemblies that have reached or exceeded their design life or components of the assemblies that are in need of repair. Assemblies that have reached their design life are identified as current deficiencies and assigned the distress 'Beyond Useful Life'. The following chart lists all current deficiencies associated with this facility.



**Budget Estimate Total: \$1,437,801.00**

## Deficiency Summary by Priority

The following chart shows the total repair costs broken down by priority. Assessors assigned deficiencies within eCOMET to one of the following priority categories:



**Budget Estimate Total: \$1,437,801.00**

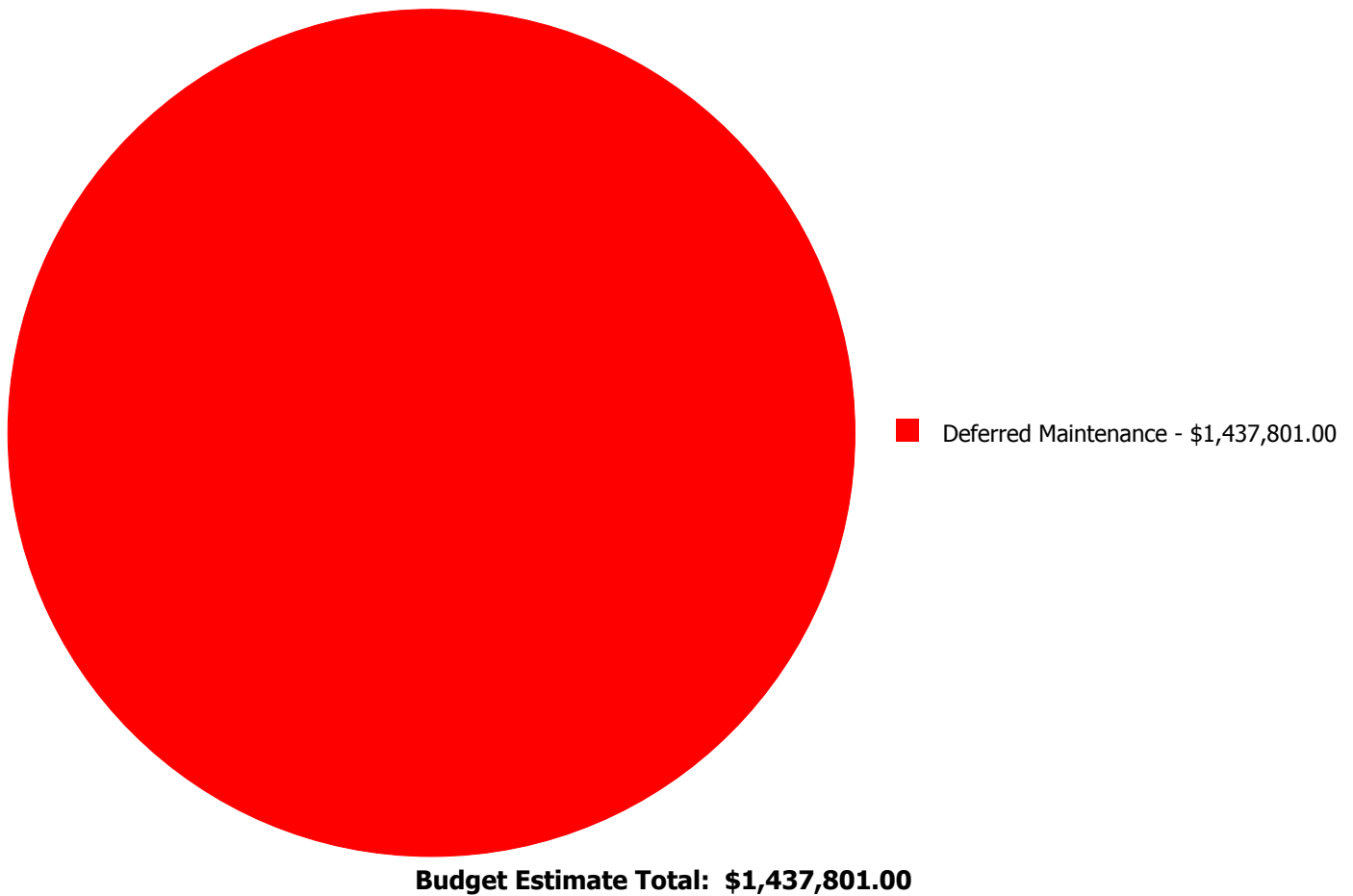
## Deficiency By Priority Investment Table

The table below shows the current investment cost grouped by deficiency priority and building system.

System Code	System Description	1 - Critical Immediate Need	2 - Trending Critical (Year 1)	3 - Necessary (Years 2-5)	4 - Recommended (Years 6-10)	5 - Grandfathered Project triggered	Total
C3020901	Carpet	\$0.00	\$0.00	\$16,500.00	\$0.00	\$0.00	\$16,500.00
C3020903	VCT	\$0.00	\$0.00	\$398,422.00	\$0.00	\$0.00	\$398,422.00
C3020999	Other - Rubber or Neoprene	\$0.00	\$0.00	\$88,011.00	\$0.00	\$0.00	\$88,011.00
D3050	Terminal & Package Units	\$0.00	\$0.00	\$657,343.00	\$0.00	\$0.00	\$657,343.00
D3060	Controls & Instrumentation	\$0.00	\$0.00	\$218,818.00	\$0.00	\$0.00	\$218,818.00
D4090	Other Fire Protection Systems	\$0.00	\$0.00	\$58,707.00	\$0.00	\$0.00	\$58,707.00
	<b>Total:</b>	\$0.00	\$0.00	\$1,437,801.00	\$0.00	\$0.00	\$1,437,801.00

## Deficiency Summary by Category

The following chart shows the total repair costs broken down by deficiency categories. Assessors assigned deficiencies to one of the following categories:





## Deficiency Details by Priority

The deficiency detail notes listed below provide additional information on identified deficiencies found within the facility.

### Priority 3 - Necessary (Years 2-5):

#### System: C3020901 - Carpet



**Location:** Media Center  
**Distress:** Beyond Expected Life  
**Category:** Deferred Maintenance  
**Priority:** 3 - Necessary (Years 2-5)  
**Correction:** Renew System  
**Qty:** 2,000.00  
**Unit of Measure:** S.F.  
**Estimate:** \$16,500.00  
**Assessor Name:** Homero Guerrero  
**Date Created:** 01/14/2020

**Notes:** The Carpet floor finish is beyond its expected service life, worn and damaged, and is recommended for replacement.

#### System: C3020903 - VCT



**Location:** Throughout Building  
**Distress:** Beyond Expected Life  
**Category:** Deferred Maintenance  
**Priority:** 3 - Necessary (Years 2-5)  
**Correction:** Renew System  
**Qty:** 73,864.00  
**Unit of Measure:** S.F.  
**Estimate:** \$398,422.00  
**Assessor Name:** Homero Guerrero  
**Date Created:** 01/09/2020

**Notes:** The VCT floor finish is beyond its expected service life, worn and damaged, and is recommended for replacement.

**System: C3020999 - Other - Rubber or Neoprene**



**Location:** Gym  
**Distress:** Beyond Expected Life  
**Category:** Deferred Maintenance  
**Priority:** 3 - Necessary (Years 2-5)  
**Correction:** Renew System  
**Qty:** 3,000.00  
**Unit of Measure:** S.F.  
**Estimate:** \$88,011.00  
**Assessor Name:** Homero Guerrero  
**Date Created:** 01/09/2020

**Notes:** The Rubber or Neoprene floor finish is beyond its expected service life, worn and damaged, and is recommended for replacement.

**System: D3050 - Terminal & Package Units**



**Location:** Roof  
**Distress:** Beyond Expected Life  
**Category:** Deferred Maintenance  
**Priority:** 3 - Necessary (Years 2-5)  
**Correction:** Renew System  
**Qty:** 80,864.00  
**Unit of Measure:** S.F.  
**Estimate:** \$657,343.00  
**Assessor Name:** Homero Guerrero  
**Date Created:** 09/28/2019

**Notes:** The terminal and package units are at the end of their useful life. The system is functional however upgrades are warranted.

**System: D3060 - Controls & Instrumentation**



**Location:** Throughout Building  
**Distress:** Beyond Expected Life  
**Category:** Deferred Maintenance  
**Priority:** 3 - Necessary (Years 2-5)  
**Correction:** Renew System  
**Qty:** 80,864.00  
**Unit of Measure:** S.F.  
**Estimate:** \$218,818.00  
**Assessor Name:** Homero Guerrero  
**Date Created:** 02/22/2020

**Notes:** Principal, maintenance staff and multiple teachers report inconsistent operation of HVAC system, extreme variations in temperature from area to adjacent area, variations in temperature from day to day or week to week within the same space and similar extreme problems.

---

**System: D4090 - Other Fire Protection Systems**



**Location:** Kitchen  
**Distress:** Beyond Expected Life  
**Category:** Deferred Maintenance  
**Priority:** 3 - Necessary (Years 2-5)  
**Correction:** Renew System  
**Qty:** 80,864.00  
**Unit of Measure:** S.F.  
**Estimate:** \$58,707.00  
**Assessor Name:** Homero Guerrero  
**Date Created:** 09/28/2019

**Notes:** The exhaust hood system is original. This building high traffic use warrants upgrades to this system based on usage and age. This deficiency provides a budgetary consideration for upgrades to the system.

---

**Executive Summary**

The condition of a Campus is the accumulation of the condition evaluations of the component buildings and the site. Building condition is evaluated based on the functional systems and elements of a building and organized according to the **UNIFORMAT II Elemental Classification**. eCOMET uses parametric estimating methodology whereby historical costs for systems, components and equipment are collected by entities such as RSMeans and converted to unit costs, typically \$/SF, and used to approximate future construction costs or replacement values. The grouping of these systems and elements and applying a current replacement value to them develops a representative building cost model. Cost Models are developed for similar building types and functions. Systems and their elements are evaluated based on their current replacement values, life cycles, installation dates and next renewal dates. Systems and their elements that are within their useful lives are further evaluated to identify current deficient conditions that may have a significant impact on a system's or element's remaining service life, and to determine if they are beyond their predicted expected life. The system's or element's current replacement value is based on RS Means Commercial Cost Data.

Following are the cost model's system details for this facility. The **Current Replacement Value (CRV)** is the amount needed to replace the property of the same present scope. The **Repair Cost** (the sum of the cost to repair/replace the Deficiencies) represents the budgeted contractor-installed costs plus owner's soft costs for the repair, replacement or renewal for a component or system level deficiency. It excludes contributing costs for other components or systems that might also be associated with the corrective actions due to packaging of the work. **Facility Condition Index (FCI)** is an industry-standard measurement of facility condition calculated as the ratio of the costs to correct a facility's deficiencies (Condition Needs) to the facility's Current Replacement Value. It ranges from 0% (new) to 100% (very poor - beyond service life). The **Remaining Service Life Index (RSLI)** is calculated as the sum of a renewable system's **Remaining Service Life (RSL)** divided by the sum of a system's Replacement Value (both values exclude soft-cost to simplify calculation updates) expressed as a percentage ranging from 100% (new) to 0% (expired). The relationship between the key metrics FCI and RSLI is an important indicator, at either the facility, building, system, or component levels, of the condition trend and the imminent need for capital renewal. These indices exist in an inverse relationship wherein the FCI increases when systems reach their expected life-cycle age, whereas the RSLI decreases annually indicating the relative time remaining before reaching the life-cycle expiration age. For example, a facility or a system with a high RSLI and a low FCI indicates it is in the early portion of its useful life. However, a low RSLI indicates that expiration dates are approaching at which point the FCI would increase. The term **FCA Score** is the inverse of Total FCI and calculated as 100-Total FCI (without the %) where 100 is best and 0 is worst condition.

Function:	
Gross Area (SF):	80,864
Year Built:	2002
Last Renovation:	2002
Replacement Value:	\$2,750,509
Repair Cost:	\$0.00
Total FCI:	0.00 %
Total RSLI:	43.35 %
FCA Score:	100.00



**Description:**

The narrative for this site is included in the Executive Summary Description at the front of this report.

**Attributes:** This asset has no attributes.

## Dashboard Summary

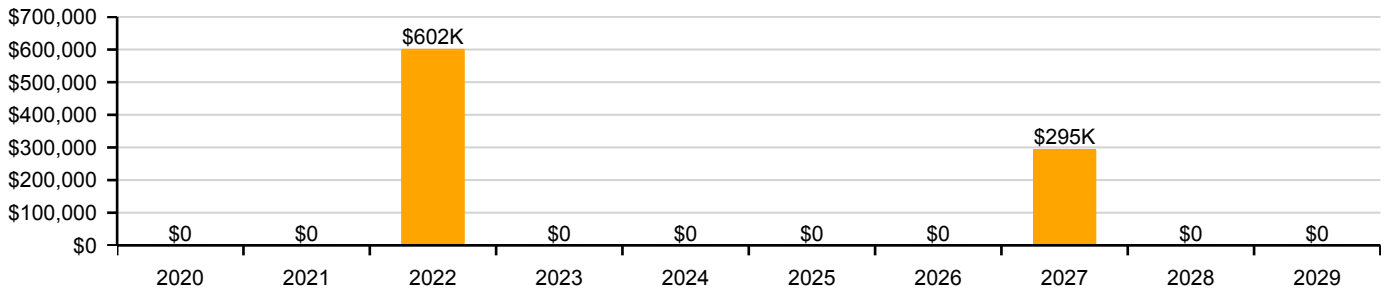
Function:		Gross Area:	80,864
Year Built:	2002	Last Renovation:	2002
Repair Cost:	\$0	Replacement Value:	\$2,750,509
FCI:	0.00 %	RSLI%:	43.35 %

No data found for this asset

No data found for this asset

No data found for this asset

### 10 Year Investment Forecast



## Condition Summary

The Table below shows the RSLI and FCI for each major building system shown at the UNIFORMAT II classification Level 2. Note that Systems with lower FCIs require less investment than systems with higher FCIs.

UNIFORMAT Classification	RSLI %	FCI %	Current Repair Cost
G20 - Site Improvements	41.01 %	0.00 %	\$0.00
G30 - Site Mechanical Utilities	66.00 %	0.00 %	\$0.00
G40 - Site Electrical Utilities	37.12 %	0.00 %	\$0.00
<b>Totals:</b>	<b>43.35 %</b>	<b>0.00 %</b>	<b>\$0.00</b>

## Photo Album

The photo album consists of the various cardinal compass directions of the building..

1). South Point Arial View - Jan 14, 2020



## Condition Detail

This section of the report contains results of the Facility Condition Assessment. The building is separated into system components based on UNIFORMAT II. The columns in the System Listing table represent the following:

1. System Code: A code that identifies the system.
2. System Description: A brief description of a system present in the building.
3. Unit Price \$: The unit price of the system.
4. UoM: The unit of measure of the system.
5. Qty: The quantity for the system
6. Life: Building Owners and Managers Association (BOMA) recommended system design life.
7. Year Installed: The date of system installation.
8. Calc Next Renewal Year: The date of system expiration based on the life, NR stands for non renewable.
9. Next Renewal Year: The suggested system expiration date by the assessor based on visual inspection.
10. RSLI: The Remaining Service Life Index of the system.
11. FCI: The Facility Condition Index of the system.
12. RSL: Remaining Service Life in years.
13. eCR: eCOMET Condition Rating (not used in this assessment)
14. Deficiency \$: The financial investment to repair/replace system to address deficiency.
15. Replacement Value \$: The replacement cost of the system as new construction.



## System Listing

The System Listing table below lists each of the systems organized by their UNIFORMAT II classification. The assessment team was tasked with recording the most recent replacement year of each system, determining the remaining service life based on the theoretical life, and evaluating the condition to confirm the forecast next replacement year. The system listing is the basis for all data contained in the Building Assessment Report.

System Code	System Description	Unit Price \$	UoM	Qty	Life	Year Installed	Calc Next Renewal Year	Next Renewal Year	RSLI%	FCI%	RSL	eCR	Deficiency \$	Replacement Value \$
G2010	Roadways	\$2.37	S.F.	80,864	35	2002	2037		51.43 %	0.00 %	18			\$191,648
G2020	Parking Lots	\$8.00	S.F.	80,864	35	2002	2037		51.43 %	0.00 %	18			\$646,912
G2030	Pedestrian Paving	\$2.33	S.F.	80,864	35	2002	2037		51.43 %	0.00 %	18			\$188,413
G2040105	Fence & Guardrails	\$1.15	S.F.	80,864	30	2002	2032		43.33 %	0.00 %	13			\$92,994
G2040950	Covered Walkways	\$1.44	S.F.	80,864	25	2002	2027		32.00 %	0.00 %	8			\$116,444
G2040950	Playing Field	\$4.28	S.F.	80,864	20	2002	2022		15.00 %	0.00 %	3			\$346,098
G2050	Landscaping	\$1.18	S.F.	80,864	25	2002	2027		32.00 %	0.00 %	8			\$95,420
G3010	Water Supply	\$1.09	S.F.	80,864	50	2002	2052		66.00 %	0.00 %	33			\$88,142
G3020	Sanitary Sewer	\$2.20	S.F.	80,864	50	2002	2052		66.00 %	0.00 %	33			\$177,901
G3030	Storm Sewer	\$1.25	S.F.	80,864	50	2002	2052		66.00 %	0.00 %	33			\$101,080
G4010	Electrical Distribution	\$2.55	S.F.	80,864	30	2002	2032		43.33 %	0.00 %	13			\$206,203
G4020	Site Lighting	\$2.98	S.F.	80,864	30	2002	2032		43.33 %	0.00 %	13			\$240,975
G4030	Site Communication and Security	\$1.28	S.F.	80,864	30	2002	2032		43.33 %	0.00 %	13			\$103,506
G4040	Other Site Electrical Utilities	\$154,772.92	Ea.	1	20	2002	2022		15.00 %	0.00 %	3			\$154,773
<b>Total</b>									<b>43.35 %</b>					<b>\$2,750,509</b>

## System Notes

The facility description in the executive summary contains an overview of each system. The system notes listed below provide additional information on select systems found within the facility.

**System:** G2010 - Roadways



**Note:**

**System:** G2020 - Parking Lots



**Note:**

**System:** G2030 - Pedestrian Paving



**Note:**

## School Assessment Report - Site

---

**System:** G2040105 - Fence & Guardrails



**Note:**

**System:** G2040950 - Covered Walkways



**Note:**

**System:** G2040950 - Playing Field



**Note:**

## School Assessment Report - Site

**System:** G2050 - Landscaping



**Note:**

**System:** G3010 - Water Supply



**Note:**

**System:** G3020 - Sanitary Sewer



**Note:**

## School Assessment Report - Site

**System:** G3030 - Storm Sewer



**Note:**

**System:** G4010 - Electrical Distribution



**Note:**

**System:** G4020 - Site Lighting



**Note:**

## School Assessment Report - Site

**System:** G4030 - Site Communication and Security



**Note:**

**System:** G4040 - Other Site Electrical Utilities



**Note:**

## Renewal Schedule

eCOMET forecasts future Capital Renewal projects for expiring systems based on the Calculated Next Renewal year found in the System Listing table. There is a 3% yearly inflation factor applied to the system costs expiring in the future. The table below reflects Capital Renewal projects over the next 10 years. Note: Blank cells (or \$0) indicate no systems are scheduled for renewal in that year.

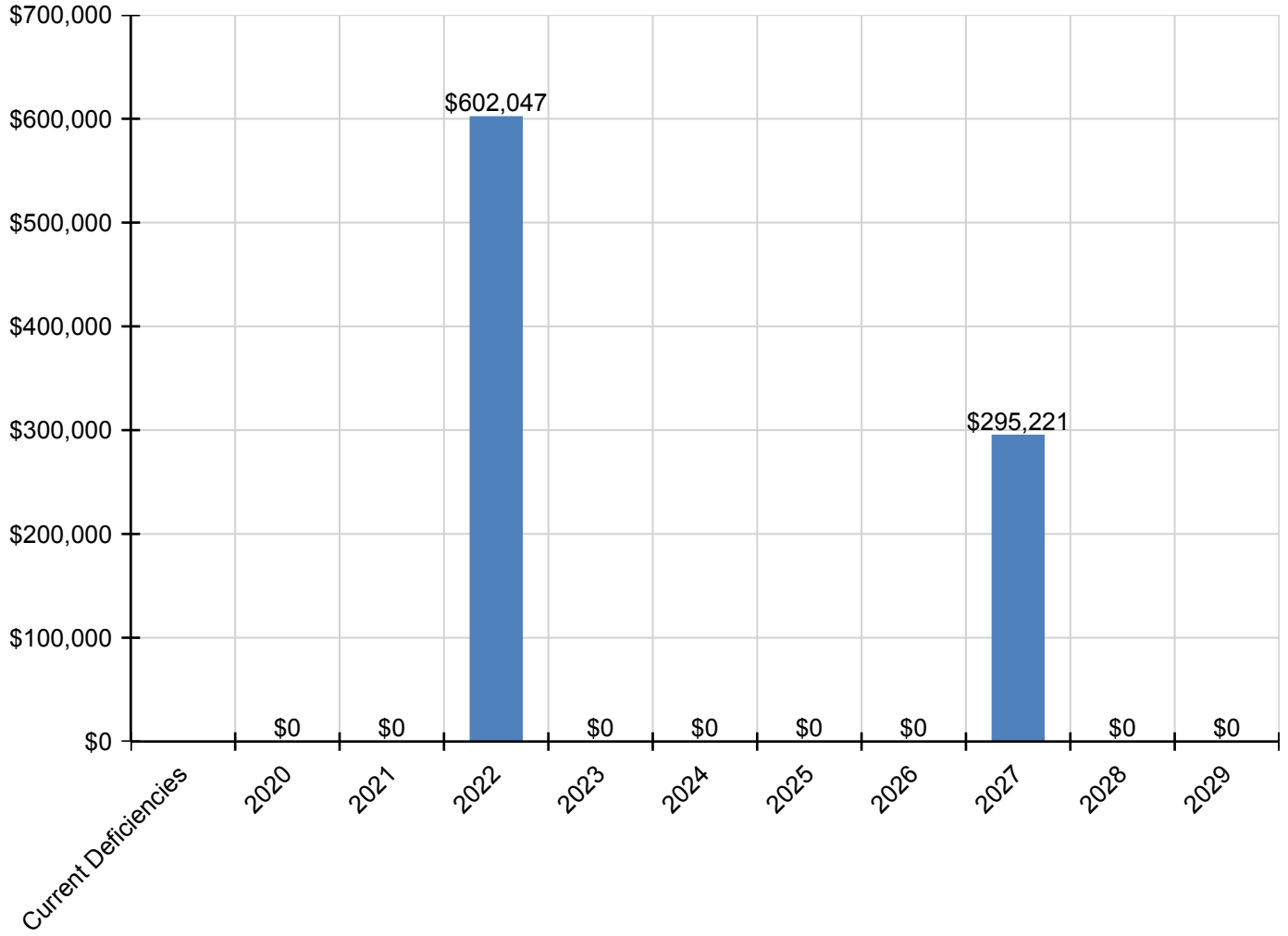
*Inflation Rate: 3%*

System	Current Deficiencies	2020	2021	2022	2023	2024	2025	2026	2027	2028	2029	Total
<b>Total:</b>		\$0	\$0	\$602,047	\$0	\$0	\$0	\$0	\$295,221	\$0	\$0	\$897,267
<b>G - Building Sitework</b>	\$0	\$0	\$0	\$0	\$0	\$0	\$0	\$0	\$0	\$0	\$0	\$0
<b>G20 - Site Improvements</b>	\$0	\$0	\$0	\$0	\$0	\$0	\$0	\$0	\$0	\$0	\$0	\$0
<b>G2010 - Roadways</b>	\$0	\$0	\$0	\$0	\$0	\$0	\$0	\$0	\$0	\$0	\$0	\$0
<b>G2020 - Parking Lots</b>	\$0	\$0	\$0	\$0	\$0	\$0	\$0	\$0	\$0	\$0	\$0	\$0
<b>G2030 - Pedestrian Paving</b>	\$0	\$0	\$0	\$0	\$0	\$0	\$0	\$0	\$0	\$0	\$0	\$0
<b>G2040 - Site Development</b>	\$0	\$0	\$0	\$0	\$0	\$0	\$0	\$0	\$0	\$0	\$0	\$0
<b>G2040105 - Fence &amp; Guardrails</b>	\$0	\$0	\$0	\$0	\$0	\$0	\$0	\$0	\$0	\$0	\$0	\$0
<b>G2040950 - Covered Walkways</b>	\$0	\$0	\$0	\$0	\$0	\$0	\$0	\$0	\$162,259	\$0	\$0	\$162,259
<b>G2040950 - Playing Field</b>	\$0	\$0	\$0	\$416,010	\$0	\$0	\$0	\$0	\$0	\$0	\$0	\$416,010
<b>G2050 - Landscaping</b>	\$0	\$0	\$0	\$0	\$0	\$0	\$0	\$0	\$132,961	\$0	\$0	\$132,961
<b>G30 - Site Mechanical Utilities</b>	\$0	\$0	\$0	\$0	\$0	\$0	\$0	\$0	\$0	\$0	\$0	\$0
<b>G3010 - Water Supply</b>	\$0	\$0	\$0	\$0	\$0	\$0	\$0	\$0	\$0	\$0	\$0	\$0
<b>G3020 - Sanitary Sewer</b>	\$0	\$0	\$0	\$0	\$0	\$0	\$0	\$0	\$0	\$0	\$0	\$0
<b>G3030 - Storm Sewer</b>	\$0	\$0	\$0	\$0	\$0	\$0	\$0	\$0	\$0	\$0	\$0	\$0
<b>G40 - Site Electrical Utilities</b>	\$0	\$0	\$0	\$0	\$0	\$0	\$0	\$0	\$0	\$0	\$0	\$0
<b>G4010 - Electrical Distribution</b>	\$0	\$0	\$0	\$0	\$0	\$0	\$0	\$0	\$0	\$0	\$0	\$0
<b>G4020 - Site Lighting</b>	\$0	\$0	\$0	\$0	\$0	\$0	\$0	\$0	\$0	\$0	\$0	\$0
<b>G4030 - Site Communication and Security</b>	\$0	\$0	\$0	\$0	\$0	\$0	\$0	\$0	\$0	\$0	\$0	\$0
<b>G4040 - Other Site Electrical Utilities</b>	\$0	\$0	\$0	\$186,037	\$0	\$0	\$0	\$0	\$0	\$0	\$0	\$186,037

\* Indicates non-renewable system

## Forecasted Capital Renewal Requirement

The following chart shows the current building deficiencies and forecasted capital renewal (sustainment) requirements over the next ten years.



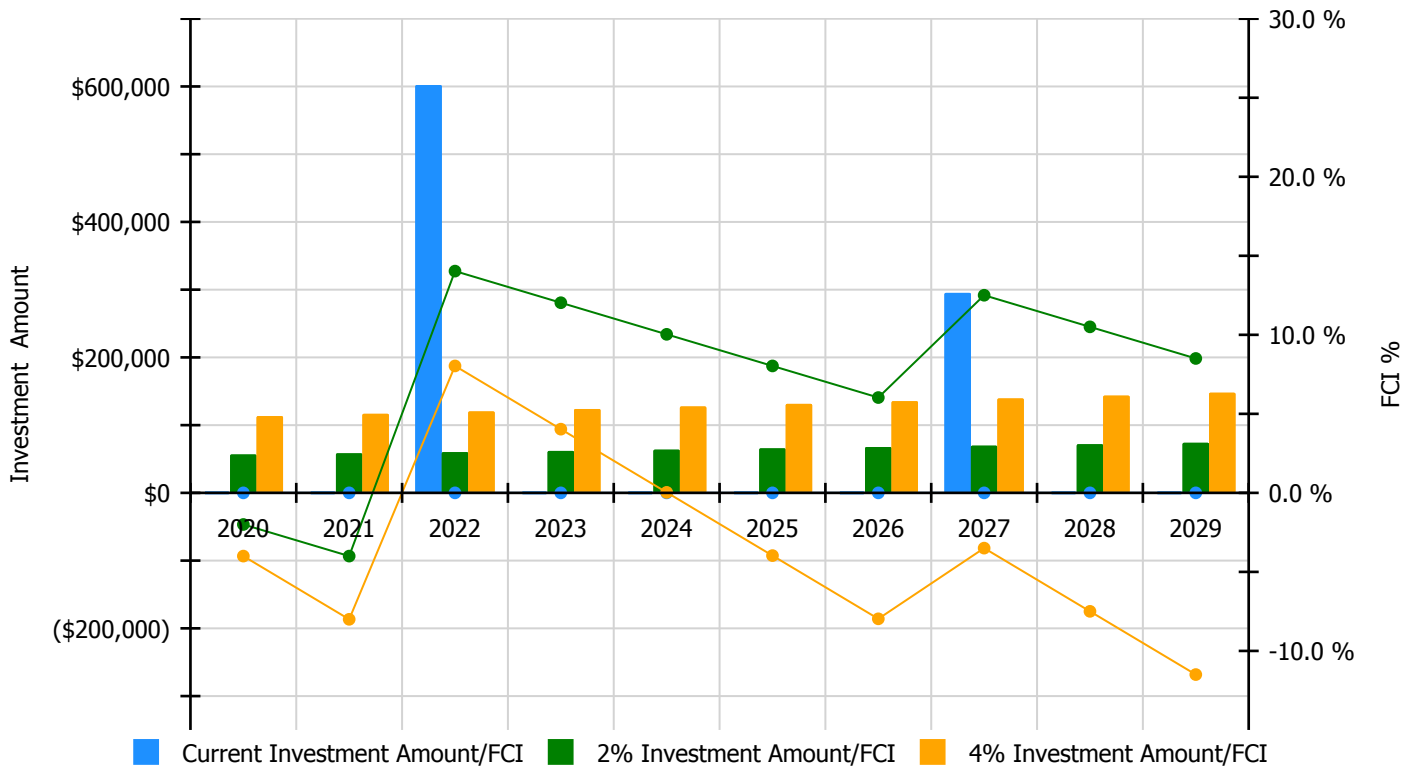


## Condition Index Forecast by Investment Scenario

The chart below illustrates the effect of various investment levels on the building FCI for the next 10 years. The levels of investment shown below include:

- Current FCI: a variable investment amount based on renewing expired systems to maintain the current FCI for the building
- 2% Investment: an annual investment of 2% of the replacement value of the building, escalated for inflation
- 4% Investment: an annual investment of 4% of the replacement value of the building, escalated for inflation

### Facility Investment vs. FCI Forecast



Year	Investment Amount Current FCI - 0%	2% Investment		4% Investment	
		Amount	FCI	Amount	FCI
2020	\$0	\$56,660.00	-2.00 %	\$113,321.00	-4.00 %
2021	\$0	\$58,360.00	-4.00 %	\$116,721.00	-8.00 %
2022	\$602,047	\$60,111.00	14.03 %	\$120,222.00	8.03 %
2023	\$0	\$61,914.00	12.03 %	\$123,829.00	4.03 %
2024	\$0	\$63,772.00	10.03 %	\$127,544.00	0.03 %
2025	\$0	\$65,685.00	8.03 %	\$131,370.00	-3.97 %
2026	\$0	\$67,656.00	6.03 %	\$135,311.00	-7.97 %
2027	\$295,221	\$69,685.00	12.50 %	\$139,371.00	-3.50 %
2028	\$0	\$71,776.00	10.50 %	\$143,552.00	-7.50 %
2029	\$0	\$73,929.00	8.50 %	\$147,858.00	-11.50 %
<b>Total:</b>	<b>\$897,267</b>	<b>\$649,548.00</b>		<b>\$1,299,099.00</b>	

## Deficiency Summary by System

Current deficiencies included assemblies that have reached or exceeded their design life or components of the assemblies that are in need of repair. Assemblies that have reached their design life are identified as current deficiencies and assigned the distress 'Beyond Useful Life'. The following chart lists all current deficiencies associated with this facility.

No data found for this asset

## Deficiency Summary by Priority

The following chart shows the total repair costs broken down by priority. Assessors assigned deficiencies within eCOMET to one of the following priority categories:

No data found for this asset

## Deficiency By Priority Investment Table

The table below shows the current investment cost grouped by deficiency priority and building system.

No data found for this asset

## Deficiency Summary by Category

The following chart shows the total repair costs broken down by deficiency categories. Assessors assigned deficiencies to one of the following categories:

No data found for this asset

## Deficiency Details by Priority

The deficiency detail notes listed below provide additional information on identified deficiencies found within the facility.

No data found for this asset

## Glossary

Abandoned	A facility owned by the city that is not occupied and not maintained. See Vacant.
Additional Cost	Total project cost is composed of hard and soft costs. Additional costs or soft expenses are costs that are necessary to accomplish the corrective work but are not directly attributable to the deficient systems direct construction cost, which are often referred to as hard cost. The components included in the soft costs vary by owner but usually include architect and contractor fees, contingencies and other owner-incurred costs necessary to fully develop and build a facility. These soft cost factors can be adjusted anytime within the eCOMET database at the owner's discretion.
Assessment	Visual survey of a facility to determine its condition. It involves looking at the age of systems, reviewing information from local sources and visual evidence of potential problems to assign a condition rating. It does not include destructive testing of materials or testing of systems or equipment for functionality.
ASTM	ASTM International (ASTM): Originally known as the American Society for Testing and Materials, ASTM is an international standards organization that develops and publishes voluntary consensus technical standards for a wide range of materials, products, systems, and services.
BOMA	Building Owners Managers of America (BOMA): National organization of public and private facility owners focused on building management tools and maintenance techniques. eCOMET® reference: Building and component system effective economic life expectancies.
Building	A fully enclosed and roofed structure that can be traversed internally without exiting to the exterior.
Building Addition	An area, space or component of a building added to a building after the original building's year built date. NOTE: As a convention in the database, "Main" was used to designate the original building. Additions built prior to 1987 (30 years) were included in the main building area calculations to reflect their predicted system depreciation characteristics and remaining service life.
Building Systems	eCOMET® uses UNIFORMAT II to organize building data. UNIFORMAT II was originally developed by the federal General Services Administration to delineate building costs by systems rather than by material. UNIFORMAT II was formalized by an NIST standard, NISTIR 6389 in 1999. It has been further quantified and updated by ASTM standard 2005, E1557-05. The Construction Specifications Institute, CSI, has taken over the standard as part of their MasterFormat / MasterSpec system.
Calculated Next Renewal	The year a system or building element would be expected to expire based solely on the date it was installed and the expected useful lifetime for that kind of system.
Capital Renewal	Capital renewal refers to the cyclical replacement of building systems or elements as they become obsolete or beyond their useful life. It is not normally included in an annual operating/maintenance budget. See calculated next renewal and next renewal.
City Cost Index (CCI)	RS Means provides building system, equipment, and construction costs at a national level. The City Cost Index (also provided by RS Means) localizes those costs to a geographic region of the United States. In eCOMET®, each building or site is assigned a City Cost Index, which adjusts all of the associated costs for systems, deficiencies and inventory to the local value.
Condition	Condition refers to the state of physical fitness or readiness of a facility system or system element for its intended use.
Condition Budget	The Condition Budget, also known as Condition Needs, represents the budgeted contractor installed costs plus owner's soft costs for the repair, replacement or renewal for a component or system level deficiency. It excludes contributing costs for other components or systems that might also be associated with the corrective actions due to packaging the work.

## School Assessment Report - Heritage Academy

---

Condition Index (CI) %	The Condition Index (CI) also known as the Remaining Service Life Index (RSLI) is calculated as the sum of a renewable system's Remaining Service Life (RSL) Value divided by the sum of a system's Replacement Value (both values exclude soft cost to simplify calculation updates) expressed as a percentage ranging from 100.00% (new) to 0.00% (expired - no remaining life).
Correction	Correction refers to an assessor's recommended deficiency repair or replacement action. For any system or element deficiency, there can be multiple and alternative solutions for its repair or replacement. A Correction is user defined and tied to a UNIFORMAT II element, or system it is intended to address. It excludes other peripheral costs that may also be included in the packaging of repair, replacement or renewal improvements that may also be triggered by the deficiency correction.
Cost Model	A cost model is a list of facility systems which could represent the installed systems a given facility. Included in the cost model are standard unit cost estimates, gross areas, life cycles and installed dates. Also represented is the repair cost for deficient systems, replacement values. See eCOMET® cost models.
Criteria	Criteria refer to the set of requirements, guidelines or standards that are assessed and rated to develop a score.
Current Period	The Current Period is the current year plus a user defined number of forward years.
Current Replacement Value (CRV)	The Current Replacement Value (CRV) of a facility, building or system represents the hypothetical cost of rebuilding or replacing an existing facility under today's codes and construction standards, using its current configuration. It is calculated by multiplying the gross area of the facility by a square foot cost developed in that facility's cost model. Replacement cost includes construction costs and owner's additional or soft costs for fees, permits and other expenses to reflect a total project cost.
Deferred Maintenance	Deferred maintenance is condition work deferred on a planned or unplanned basis to a future budget cycle or postponed until funds are available.
Deficiency	A deficiency is a repair item that is damaged, missing, inadequate or insufficient for an intended purpose.
Deficiency Category	Category refers to the type or class of a user defined deficiency grouping with shared or similar characteristics. Category descriptions include, but are not limited to: Accessibility Code Compliance, Appearance, Building Code Compliance, Deferred Maintenance, Energy, Environmental, Life Safety Code Compliance, and Safety.
Deficiency Priority	Priority refers to a deficiency's urgency for repair as determined by the assessment team. Five typical industry priority settings were used for the assessment: Priority 1 – Currently Critical; Priority 2 – Potentially Critical; Priority 3 – Necessary/Not Yet Critical; Priority 4 – Recommended.
Distress	Distress refers to a user-defined root cause of a deficiency. Distress descriptions are: Beyond Service Life, Damaged, Inadequate, Needs Remediation, and Missing.
eCOMET®	Energy and Condition Management Estimation Technology (eCOMET®) is Parsons proprietary facility asset management software developed to provide facility managers with a state of the art, web-based tool to develop and maintain a comprehensive database of FCA data and information used for facility asset management, maintenance and repair, and capital renewal planning. eCOMET® is used by Parsons and its clients as the primary tool for collecting FCA data, preparing cost estimates, generating individual facility reports and cost estimates, and developing the overall capital renewal program.
eCOMET® Cost Models	eCOMET cost models are derived from RS Means Square Foot Cost Data cost models and these models are used to develop the current replacement value (CRV) and assign life cycle costs to the various systems within a building. Cost models are assigned current costs-per-square-foot to establish replacement values. The Cost models are designed to represent a client specific facility that meets local standards cost trends.



## School Assessment Report - Heritage Academy

---

Element	Elements are the major components that comprise building systems as defined by UNIFORMAT II.
Expected Life	Also referred to as Useful Life. See Useful Life definition.
Facility	A facility refers to site(s) building(s) or building addition(s) or combinations thereof that provide a particular service.
Facility Attributes	Customizable eCOMET fields to identify attributes specific to a facility. These fields are part of the eCOMET database set-up with the owner.
Facility Condition Assessment (FCA)	A facility condition assessment (FCA) is a visual inspection of buildings and grounds at a facility to identify and estimate current and future needed repairs or replacements of major systems for planning and budgeting purposes. It is typically performed for organizations that are tasked with the day to day maintenance, operation, and capital renewal (replacement) of building systems and components of a large inventory of facilities. The primary goal of an FCA is to objectively and quantifiably identify, inspect, and prioritize the repair and replacement needs of the building and ground systems (e.g., roofs, windows, doors, floor finishes, plumbing fixtures, parking lot, and sidewalks) within facilities that have either failed or have surpassed their service life, and to identify and forecast future capital replacement needs for systems that have not yet failed, but planned replacement of those systems is needed to ensure that the facilities will continue to meet the mission of the organization.
Facility Condition Index (FCI%)	FCI is an industry-standard measurement of a facility's condition that is the ratio of the cost to correct a facility's deficiencies to the Current Replacement Value of the facilities. The higher the FCI the poorer the condition of a facility. After an FCI is established for all buildings within a portfolio a building's condition can be ranked relative to other buildings. The FCI may also represent the condition of a portfolio based on the cumulative FCIs of the portfolio's facilities.
Forecast Period	The Forecast Period refers to a user defined number of years forward of the Current Period.
Gen (Generate)	The Cost Model has a Gen box for each system line item. By checking the box, eCOMET will generate life cycle deficiencies based on the Year Installed and the Life for that system. Systems that typically do not re-generate (foundations, floor construction, roof construction, basement walls, etc.) would not have the Gen box checked as those systems would not re-generate at the end of a life cycle. In those instances, it would be more practical and cost effective to demolish the entire facility than re-new those systems.
Gross Square Feet (GSF)	The size of the enclosed floor space of a building in square feet measured to the outside face of the enclosing wall.
Life Cycle	Life cycle refers to the period of time that a building or site system or element can be expected to adequately serve its intended function. Parsons assigns expected life cycles to all building systems based on Building Operators and Managers of America (BOMA) recommended life cycles, manufacturers suggested life, and RS Means cost data, and client-provided historical data. BOMA standards are a nationally recognized source of life cycle data for various components and/or systems associated with facilities. RS Means is a national company specializing in construction estimating and costs.
Next Renewal	Next Renewal refers to a manually-adjusted expected useful life of a system or element based on on-site inspection either by reducing or extending the Calculated Next Renewal to more accurately reflect current conditions.
Order of Magnitude	Order of Magnitude refers to a rough approximation made with a degree of knowledge and confidence that the budgeted, projected or estimated cost falls within a reasonable range of cost values.
Remaining Service Life (RSL)	RSL is the number of years service remaining for a system or equipment item. It is automatically calculated based on the difference between the current year and the 'Calculated Next Renewal' date or the 'Next Renewal' date whichever one is the later date.

## School Assessment Report - Heritage Academy

---

Remaining Service Life Index (RSLI)	The Remaining Service Life Index (RSLI), also known as the Condition Index (CI), is calculated as the sum of a renewable system's or component's Remaining Service Life (RSL) Value divided by the sum of a system's or component's Replacement Value (both values exclude softcost to simplify calculation updates) expressed as a percentage ranging from 100.00% (new) to 0.00% (expired - no remaining service life).
Remaining Service Life Value	Remaining Service Life Value, also known as the RSL Weight, is a calculated value used to determine the RSLI and is equal to the system Value (Unit Cost * Qty) * RSL (not displayed).
Renewal Factors	Renewal factors represent the difference in cost of renovating or replacing an existing system, rather than new construction of a building system. For example, installing a new built-up roof on an existing building would include removing and disposing of the old roof, a cost not associated with new construction. Using a renewal premium to account for demolition and other difficulty costs, Parsons typically assigns a renewal factor of 110%.
Renewal Schedule	A timeline that provides the items that need repair the year in which the repair is needed and the estimated price of the renewal.
Repair Cost	Repair cost is the sum of all the deficiencies associated with a building or multiple buildings/facilities. It will include any applied soft costs or City Cost Indexes.
Replacement Value	See Current Replacement Value.
Site	A facility's grounds and its utilities, roadways, landscaping, fencing and other typical land improvements needed to support a facility.
Soft Costs	Soft Costs are a construction industry term that refers to expense items that are not considered direct construction costs. Soft costs are user-defined and include architectural, engineering, management, testing, and mitigation fees, and other owner pre- and post-construction expenses.
Sustainability	Sustainability refers to the collection of policies and strategies that meet society's present needs without compromising the ability of future generations to meet their own needs.
System	System refers to building and related site work elements as described by ASTM Uniformat II Classification for Building Elements (E1557-97) a format for classifying major facility elements common to most buildings. Elements usually perform a given function regardless of the design specification construction method or materials used. See also Uniformat II.
System Generated Deficiency	eCOMET automatically generates system deficiencies based on system life cycles using the systems installation dates as the base year. By adjusting the Next Renewal date ahead or behind the predicted or stated life cycle date, a system cost will come due earlier or later than the originally installed life cycle date. This utility accounts for good maintenance conditions and a longer life, or early expiration of a system life due to any number of adverse factors such as poor installation, acts of god, material defects, poor design applications and other factors that may shorten the life of a material or system. It is important to mention that the condition of the systems is not necessarily a reflection of maintenance practices, but a combination of system usage and age.
UNIFORMAT	ASTM UNIFORMAT II, Classification for Building Elements (E1557-97), a publication of the Construction Specification Institute (CSI), is a format used to classify major facility components common to most buildings. The format is based on functional elements or parts of a facility characterized by their functions without regard to the materials and methods used to accomplish them. These elements are often referred to as systems or assemblies.
Unit Price	The Unit Price (Raw) x the Additional Cost Template percentage.
Unit Price (Raw)	The actual \$/sq. ft. cost being used for the building and systems. It will include adjustments for the City Cost Index applied to the facility.

## School Assessment Report - Heritage Academy

---

Useful Life	Also known as Expected Life, Useful Life refers to the intrinsic period of time a system or element is expected to perform as intended. Useful life is generally provided by manufacturers of materials, systems and elements through their literature, testing and experience. Useful Lives in the database are derived from the Building Owners and Managers (BOMA) organization's guidelines, RSMeans cost data, and from client- defined historical experience.
Vacant	Vacant refers to a facility that is not occupied but is a maintained facility. See Abandoned.
Year Built	The year that a building or addition was originally built based on substantial completion or occupancy.
Year Installed	The year a system or element was built or the most recent major renovation date where a minimum of 70% of the system's Current Replacement Value (CRV) was replaced.

### Suitability Report - Full

Project #: 12382	County: Atlanta Public Schools	Site #: 0103
Project: APS Assessments 2019	Region: 761	Site: Heritage Academy
Grade Config: PK-5	Site Type: Elementary	Site Size: 7.00

Suitability	Rating	Score	Possible Score	Percent Score
<b>Suitability - ES</b>				
<b>Learning Environment</b>				
Learning Style Variety	Poor	2.50	5.00	50.00
Interior Environment	Good	1.60	2.00	80.00
Exterior Environment	Good	1.20	1.50	80.00
<b>General Classrooms</b>				
Environment	Good	3.72	4.65	80.00
Size	Excel	11.63	11.63	100.00
Location	Excel	3.49	3.49	100.00
Storage/Fixed Equip	Excel	3.49	3.49	100.00
<b>Kindergarten</b>				
Environment	Good	0.33	0.42	80.00
Size	Excel	1.04	1.04	100.00
Location	Excel	0.31	0.31	100.00
Storage/Fixed Equip	Excel	0.31	0.31	100.00
<b>ECE</b>				
Environment	Good	0.40	0.50	80.00
Size	Excel	1.25	1.25	100.00
Location	Excel	0.37	0.37	100.00
Storage/Fixed Equip	Excel	0.37	0.37	100.00
<b>Self-Contained Special Ed</b>				
Environment	Good	0.38	0.48	80.00
Size	Good	0.96	1.20	80.00
Location	Excel	0.36	0.36	100.00
Storage/Fixed Equip	Good	0.29	0.36	80.00
<b>Instructional Resource Rooms</b>				
Environment	Good	0.58	0.72	80.00
Size	Excel	1.80	1.80	100.00
Location	Excel	0.54	0.54	100.00
Storage/Fixed Equip	Excel	0.54	0.54	100.00
<b>Science</b>				
Environment	Excel	0.40	0.40	100.00
Size	Excel	1.00	1.00	100.00
Location	Excel	0.30	0.30	100.00
Storage/Fixed Equip	Excel	0.30	0.30	100.00
<b>Music</b>				
Environment	Good	0.59	0.74	80.00

Project #: 12382

County: Atlanta Public Schools

Site #: 0103

Project: APS Assessments 2019

Region: 761

Site: Heritage Academy

Grade Config: PK-5

Site Type: Elementary

Site Size: 7.00

Suitability	Rating	Score	Possible Score	Percent Score
Size	Excel	1.85	1.85	100.00
Location	Excel	0.56	0.56	100.00
Storage/Fixed Equip	Good	0.44	0.56	80.00
<b>Art</b>				
Environment	Good	0.37	0.47	80.00
Size	Excel	1.17	1.17	100.00
Location	Excel	0.35	0.35	100.00
Storage/Fixed Equip	Excel	0.35	0.35	100.00
<b>Maker Space</b>				
Environment	Excel	0.35	0.35	100.00
Size	Excel	0.88	0.88	100.00
Location	Excel	0.26	0.26	100.00
Storage/Fixed Equip	Excel	0.26	0.26	100.00
<b>Computer Labs</b>				
Environment	Good	0.27	0.34	80.00
Size	Excel	0.85	0.85	100.00
Location	Excel	0.26	0.26	100.00
Storage/Fixed Equip	Excel	0.26	0.26	100.00
<b>P.E.</b>				
Environment	Good	1.54	1.92	80.00
Size	Good	3.84	4.80	80.00
Location	Excel	1.44	1.44	100.00
Storage/Fixed Equip	Excel	1.44	1.44	100.00
<b>Performing Arts</b>				
Environment	Good	0.48	0.60	80.00
Size	Excel	1.51	1.51	100.00
Location	Excel	0.45	0.45	100.00
Storage/Fixed Equip	Excel	0.45	0.45	100.00
<b>Media Center</b>				
Environment	Excel	0.97	0.97	100.00
Size	Excel	2.44	2.44	100.00
Location	Excel	0.73	0.73	100.00
Storage/Fixed Equip	Excel	0.73	0.73	100.00
<b>Restrooms (Student)</b>	Excel	0.89	0.89	100.00
<b>Administration</b>	Excel	2.56	2.56	100.00
<b>Counseling</b>	Excel	0.29	0.29	100.00
<b>Clinic</b>	Excel	0.58	0.58	100.00
<b>Staff WkRm/Toilets</b>	Excel	1.27	1.27	100.00
<b>Cafeteria</b>	Excel	5.00	5.00	100.00
<b>Food Service and Prep</b>	Excel	6.20	6.20	100.00
<b>Custodial and Maintenance</b>	Excel	0.50	0.50	100.00
<b>Outside</b>				
Vehicular Traffic	Poor	1.00	2.00	50.00
Pedestrian Traffic	Excel	0.97	0.97	100.00
Parking	Excel	0.81	0.81	100.00
Play Areas	Excel	2.34	2.34	100.00

Project #: 12382

County: Atlanta Public Schools

Site #: 0103

Project: APS Assessments 2019

Region: 761

Site: Heritage Academy

Grade Config: PK-5

Site Type: Elementary

Site Size: 7.00

Suitability	Rating	Score	Possible Score	Percent Score
<b>Safety and Security</b>				
Fencing	Fair	0.49	0.75	65.00
Signage & Way Finding	Poor	0.50	1.00	50.00
Ease of Supervision	Fair	1.95	3.00	65.00
Controlled Entrances	Fair	0.33	0.50	65.00
<b>Total For Site:</b>		<b>90.26</b>	<b>100.00</b>	<b>90.26</b>

Comments

Suitability - ES

Heritage Academy Elementary is located in the Orchard Knob community in southeast Atlanta. Built in 2002, the school replaced Minnie Howell Elementary.

Suitability - ES->Learning Environment-->Learning Style Variety

Room configurations throughout the building did not facilitate flexible use of the spaces.

Suitability - ES->Outside-->Vehicular Traffic

There is no dedicated car lane for student drop-off. Cars drive through the faculty parking lot and students cross the bus loading zone to get to the building.

Suitability - ES->Safety and Security-->Fencing

The fencing around the school does not meet the standard. There are gaps that allow the public unimpeded access to the campus.

Suitability - ES->Safety and Security-->Signage & Way Finding

There is limited directional signage to direct visitors to the appropriate areas of access to the school, and there are no directional signs throughout the interior of the school. None of the four required signs are posted on the building exterior.

Suitability - ES->Safety and Security-->Ease of Supervision

There is not sufficient direct line of sight or camera coverage of areas through the building.

Suitability - ES->Safety and Security-->Controlled Entrances

There are cameras throughout the interior and around all exterior areas; however, their visual range is limited and does not extend beyond 5-10 feet of the camera lens, resulting in blind spots from every camera.